



Technical Information

S3000

HMF Z001383

**Series 3000****Rev.****No.**

Technical Data	10-03-2008	31 09310
Lifting capacity diagram, 3000-K2	10-03-2008	31 09322
Lifting capacity diagram, 3000-K3	10-03-2008	31 09323
Lifting capacity diagram, 3000-K4	10-03-2008	31 09324
Lifting capacity diagram, 3000-K5	10-03-2008	31 09325
Lifting capacity diagram, 3000-K6	10-03-2008	31 09326
Lifting capacity diagram, 3000-K7	10-03-2008	31 09327
Lifting capacity diagram, 3000-K8	10-03-2008	31 09328
Manual extensions, K4-K8	10-03-2008	31 09333
Dimension sketch	10-03-2008	31 09340
Lifting height at loader column	10-03-2008	31 09345
Centres of gravity	10-03-2008	31 09375
Centres of gravity of extensions, K4-K8	10-03-2008	31 09376

Serie 3000 with Fly-Jib

Technical Data, FJ5	10-03-2008	31 093110
Technical Data, 3000-K3 with FJ900	10-03-2008	31 093111
Technical Data, 3000-K4 with FJ900	10-03-2008	31 093112
Lifting capacity diagram, 3000-K5 with FJ5	10-03-2008	31 093120
Lifting capacity diagram, 3000-K6 with FJ5	10-03-2008	31 093121
Lifting capacity diagram, 3000-K3 with FJ900-K2	10-03-2008	31 093124
Lifting capacity diagram, 3000-K3 with FJ900-K3	10-03-2008	31 093125
Lifting capacity diagram, 3000-K3 with FJ900-K4	10-03-2008	31 093126
Lifting capacity diagram, 3000-K4 with FJ900-K2	10-03-2008	31 093127
Lifting capacity diagram, 3000-K4 with FJ900-K3	10-03-2008	31 093128
Lifting capacity diagram, 3000-K4 with FJ900-K4	10-03-2008	31 093129
Manual extensions, FJ5	10-03-2008	31 093133
Dimension sketch, 3000 with FJ5	10-03-2008	31 093140
Dimension sketch, FJ5	10-03-2008	31 093145
Centres of gravity, 3000 with FJ5 / FJ900	10-03-2008	31 093175



Performance	Unit	3000-K1	3000-K2	3000-K3
Load moment	tm	29.1	28.2	27.2
Hydraulic reach	m	6.3	8.3	10.4
Hydraulic telescopic movement	mm	1850	3800	5850
Reach with manual extensions	m	-	-	-
Lifting capacity, hydraulic (main boom, 14° above horizontal)	kg - m	6650 – 4.3 4700 – 6.2	6400 – 4.4 4450 – 6.2 3375 – 8.2	6170 – 4.4 4225 – 6.3 3175 – 8.2 2500 – 10.3
Lifting capacity, manual extensions	kg - m	-	-	-
Slewing torque	kgm	3350	3350	3350
Slewing angle	degrees	420	420	420

Measures

Height above chassis when folded	mm	2355	2355	2355
Width when folded	mm	2500	2500	2500
Length, without extra valves	mm	1060	1060	1060
Length, with extra valves (Hose guides)	mm	-	1175	1175
Length, with extra valves (Internal hose routing)	mm	-	-	1060
Stabilizer spread, standard	mm	6200	6200	6200

Working speeds

Slewing speed	°/s	10	10	10
Lifting speed at max. reach	m/s	0.7 / 0.15	0.9 / 0.2	1.1 / 0.25

Weights

Standard loader, excl. stab. legs	kg	2375	2630	2850
Stabilizer legs, standard	kg	475	475	475
Mounting bolts	kg	95	95	95
Oil in cylinders	kg	36	41	47

Power consumption / pump performance

Working pressure	Bar	320	320	320
Pump performance	l/min	65	65	65
Power consumption	KW	33	33	33
Max. oil consumption	l	35.7	41.8	47.6
Oil capacity in planetary gear	l	2.8	2.8	2.8
Oil capacity in separate tank	l	160	160	160



Performance	Unit	3000-K4	3000-K5	3000-K6
Load moment	tm	26.6	26.0	25.1
Hydraulic reach	m	12.5	14.7	16.9
Hydraulic telescopic movement	mm	7900	10050	12200
Reach with manual extensions	m	21.4	23.8	26.3
Lifting capacity, hydraulic (main boom, 14° above horizontal)	kg - m	5900 – 4.5 4000 – 6.4 2950 – 8.4 2300 – 10.4 1910 – 12.4	5650 – 4.6 3800 – 6.4 2750 – 8.4 2120 – 10.4 1700 – 12.5 1450 – 14.6	5450 – 4.6 3625 – 6.5 2600 – 8.4 1950 – 10.5 1550 – 12.5 1275 – 14.7 1100 – 16.8
Lifting capacity, manual extensions	kg - m	1400 – 14.7 1150 – 16.8 875 – 19.1 700 – 21.3	1075 – 16.8 850 – 19.1 675 – 21.3 560 – 23.7	820 – 19.1 675 – 21.3 525 – 23.7 400 – 26.2
Slewing torque	kgm	3350	3350	3350
Slewing angle	degrees	420	420	420

Measures

Height above chassis when folded	mm	2355	2355	2355
Width when folded	mm	2500	2500	2500
Length, without extra valves	mm	1060	1060	1060
Length, with extra valves (Hose guides)	mm	1175	1175	1175
Length, with extra valves (Internal hose routing)	mm	1060	1060	1060
Stabilizer spread, standard	mm	6200	6200	6200

Working speeds

Slewing speed	°/s	10	10	10
Lifting speed at max. reach	m/s	1.3 / 0.25	1.5 / 0.3	1.7 / 0.3

Weights

Standard loader, excl. stab. legs	kg	3060	3260	3450
Stabilizer legs, standard	kg	475	475	475
Mounting bolts	kg	95	95	95
Oil in cylinders	kg	53	58	63

Power consumption / pump performance

Working pressure	Bar	320	320	320
Pump performance	l/min	65	65	65
Power consumption	KW	33	33	33
Max. oil consumption	l	53.4	58.5	63.6
Oil capacity in planetary gear	l	2.8	2.8	2.8
Oil capacity in separate tank	l	200	200	200



Performance	Unit	3000-K7	3000-K8
Load moment	tm	24.8	24.5
Hydraulic reach	m	19.1	21.2
Hydraulic telescopic movement	mm	14300	16400
Reach with manual extensions	m	26.2	26.1
Lifting capacity, hydraulic (main boom, 14° above horizontal)	kg - m	5270 – 4.7 3450 – 6.6 2450 – 8.5 1800 – 10.6 1400 – 12.6 1140 – 14.8 960 – 16.9 850 – 19.0	5100 – 4.8 3340 – 6.6 2325 – 8.6 1700 – 10.6 1300 – 12.7 1025 – 14.8 850 – 17.0 725 – 19.1 650 – 21.2
Lifting capacity, manual extensions	kg - m	610 – 21.3 500 – 23.6 385 – 26.1	475 – 23.5 375 – 26.0
Slewing torque	kgm	3350	3350
Slewing angle	degrees	420	420

Measures

Height above chassis when folded	mm	2355	2355
Width when folded	mm	2500	2500
Length, without extra valves	mm	1135	1135
Length, with extra valves (Hose guides)	mm	-	-
Length, with extra valves (Internal hose routing)	mm	1135	1135
Stabilizer spread, standard	mm	6200	6200

Working speeds

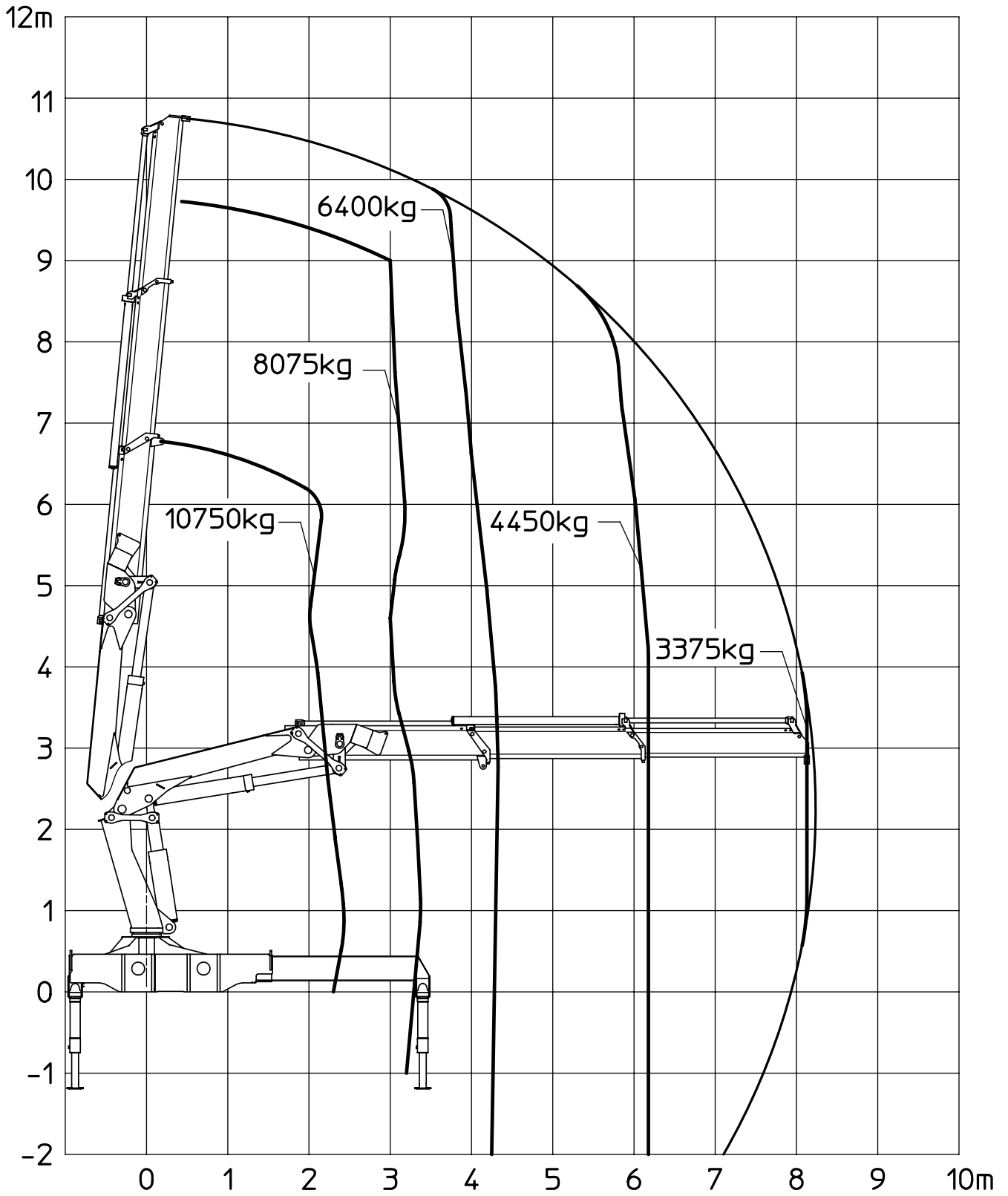
Slewing speed	°/s	10	10
Lifting speed at max. reach	m/s	1.9 / 0.3	2.1 / 0.35

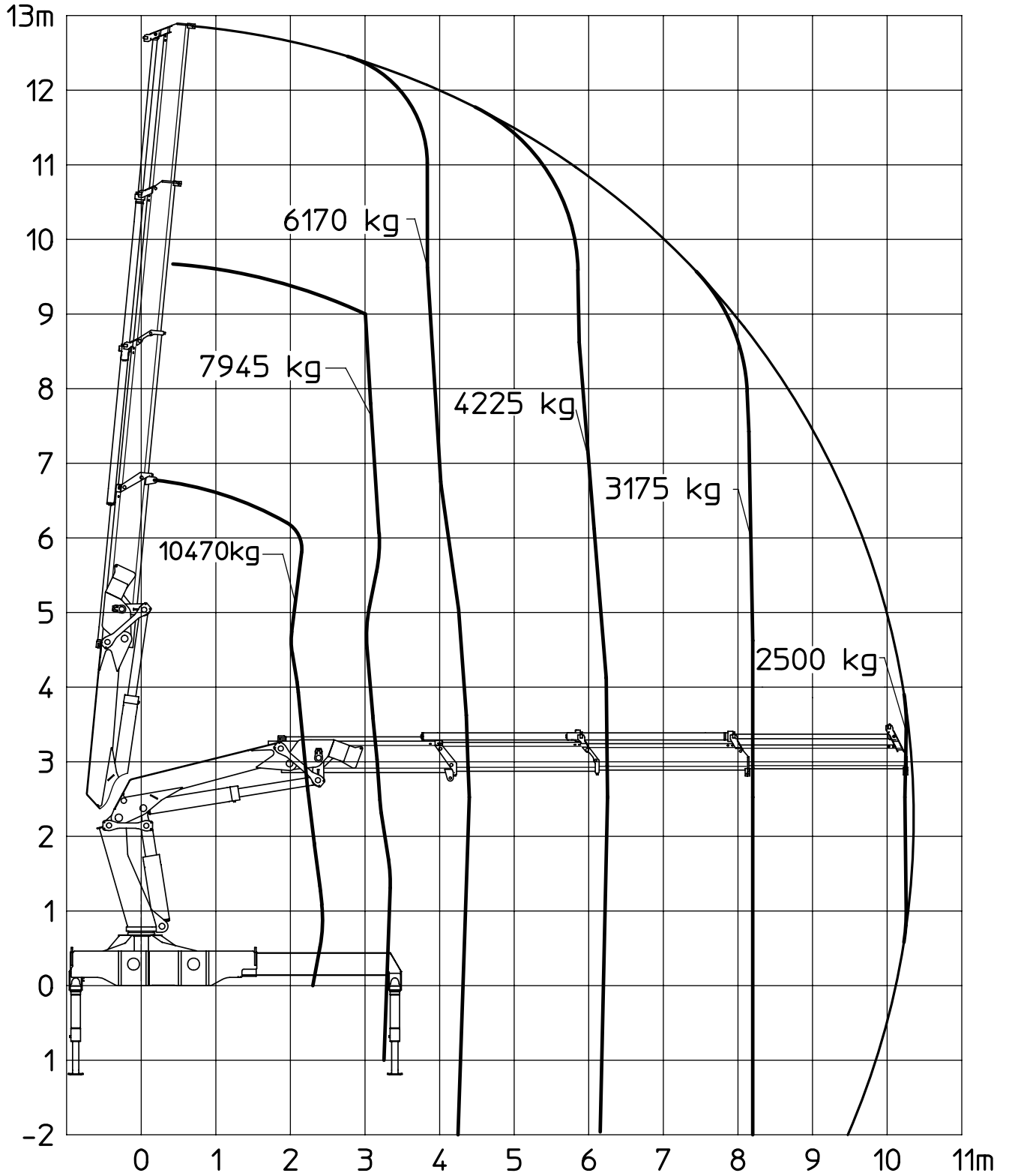
Weights

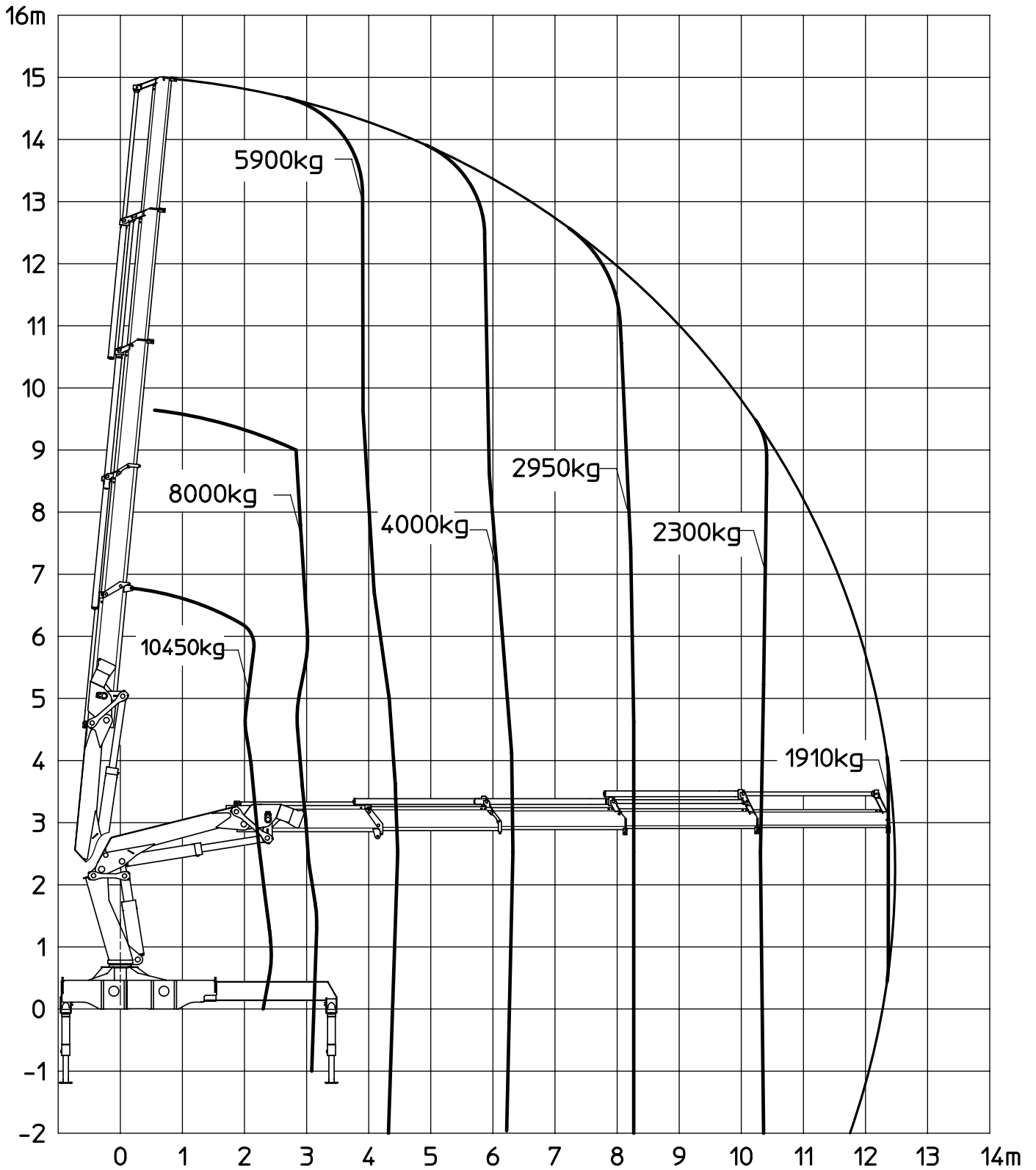
Standard loader, excl. stab. legs	kg	3600	3725
Stabilizer legs, standard	kg	475	475
Mounting bolts	kg	95	95
Oil in cylinders	kg	68	73

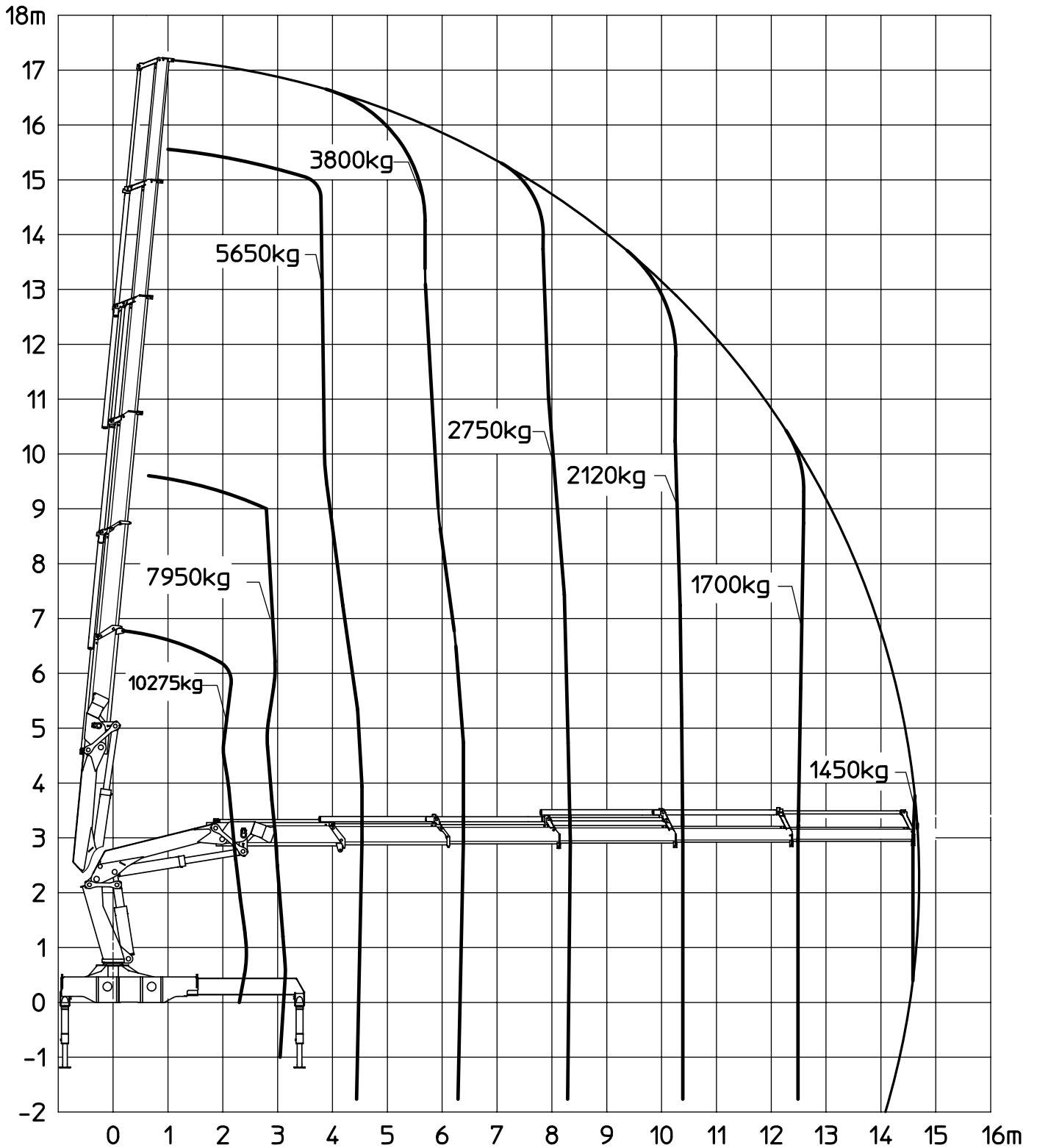
Power consumption / pump performance

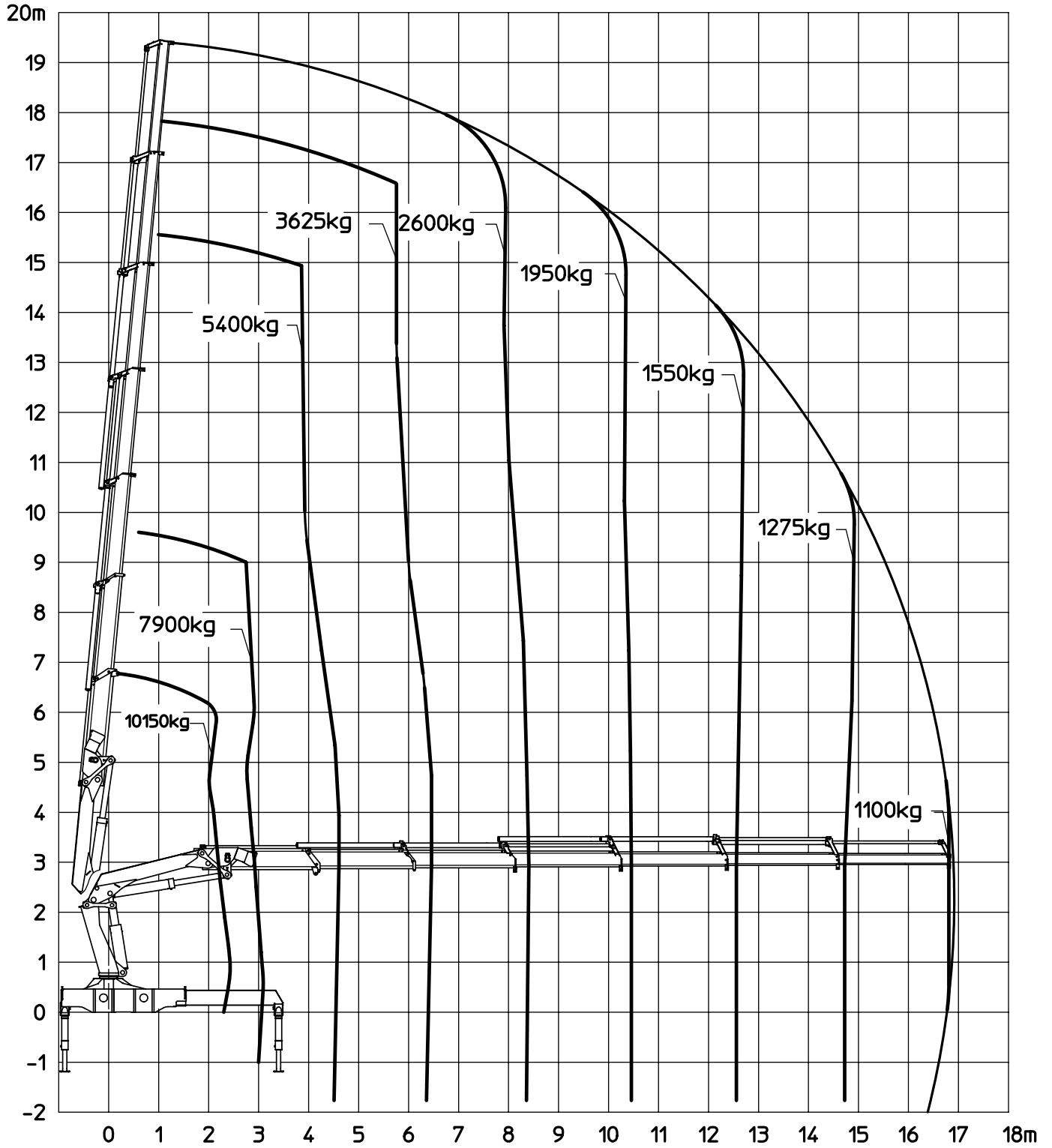
Working pressure	Bar	320	320
Pump performance	l/min	65	65
Power consumption	KW	33	33
Max. oil consumption	l	67.0	70.3
Oil capacity in planetary gear	l	2.8	2.8
Oil capacity in separate tank	l	200	200

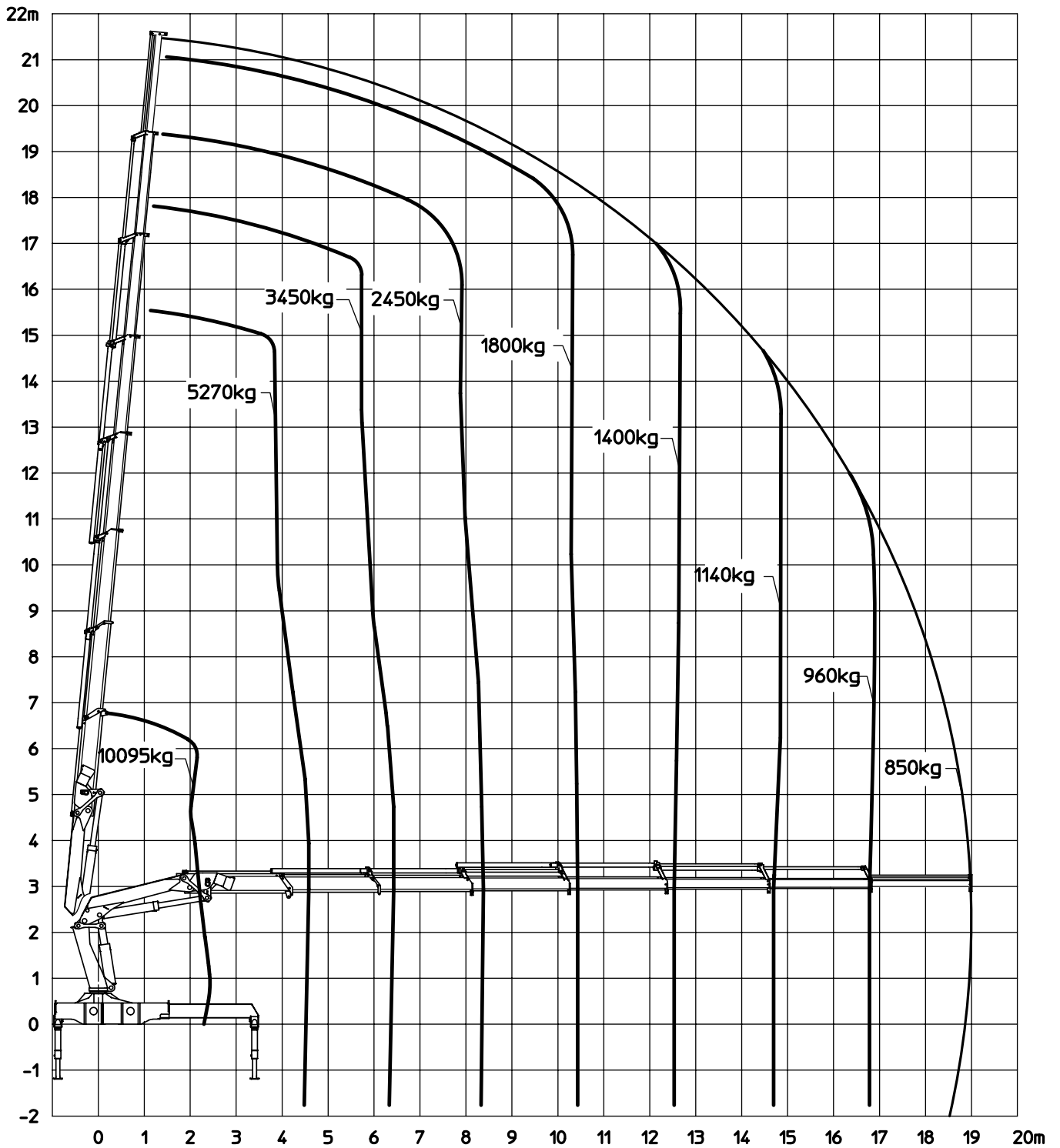


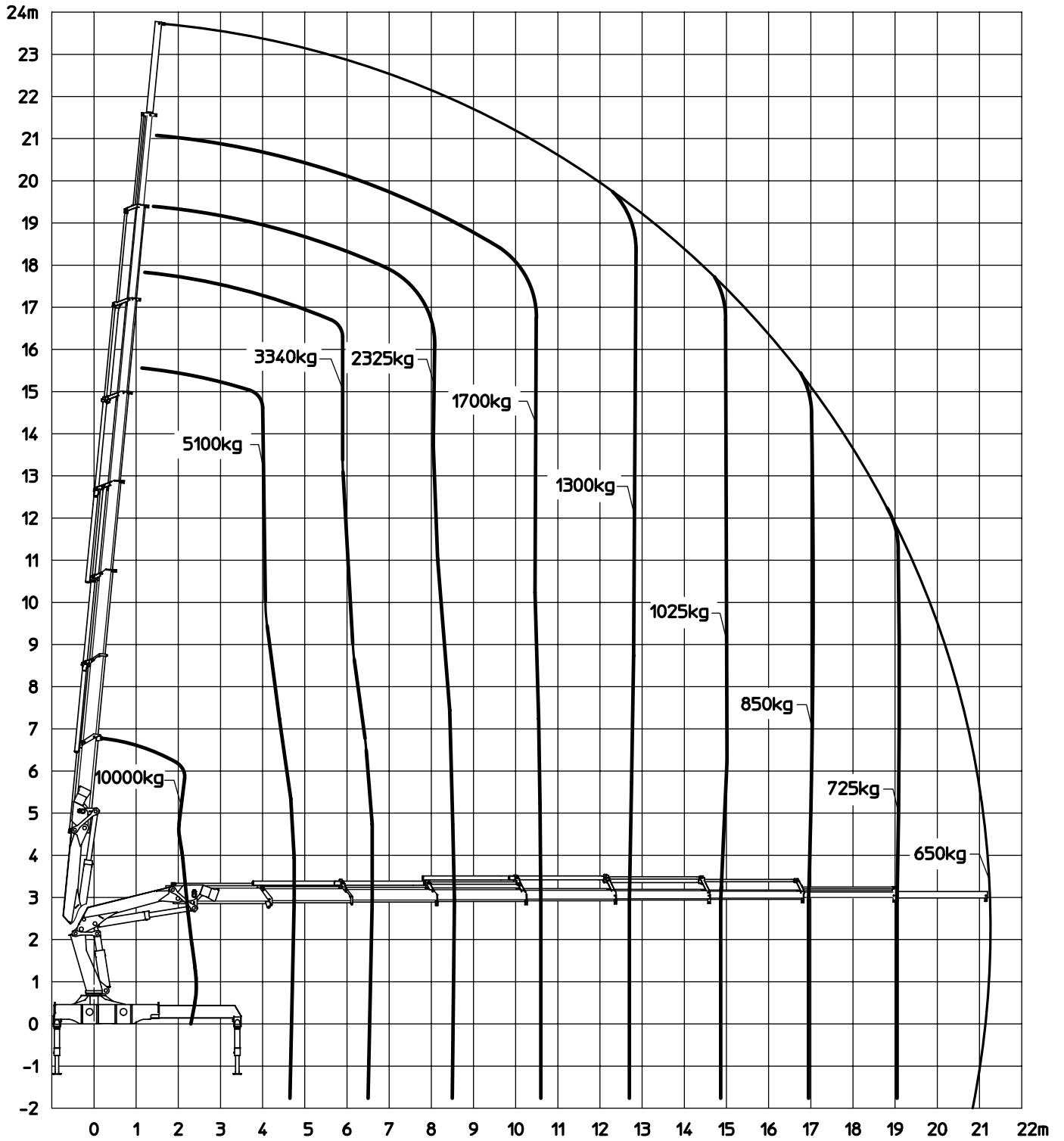














Manuelle forlængerarme, K4-K8

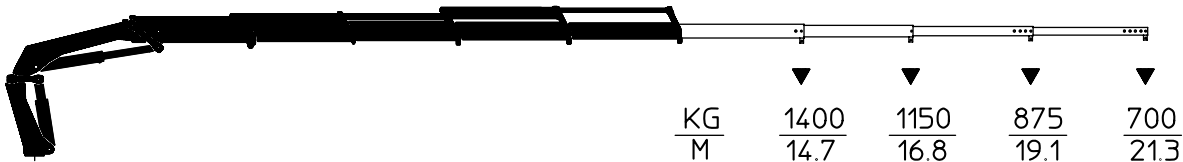
Manual extensions, K4-K8

Manuelle Verlängerungen, K4-K8

Side:
Page: 1 (1)
Seite:
Date: 10.03.2008
Datum:

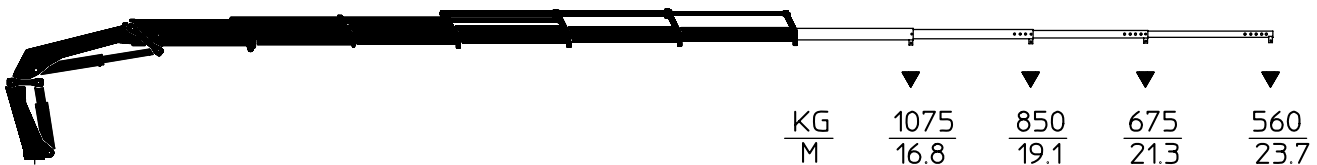
3000-K4

No.	62 95 890	62 95 930	62 95 960	62 96 240
Dim.	255 / 151	222 / 131	189 / 111	156 / 91



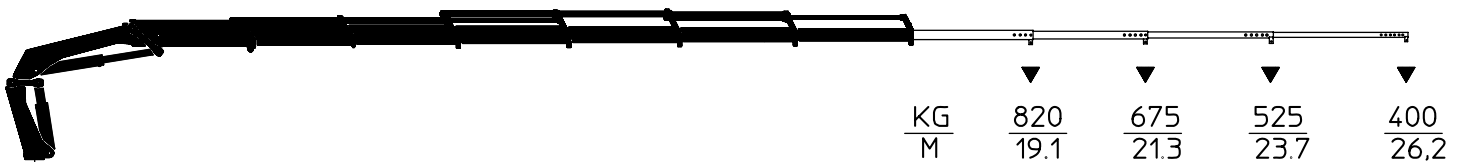
3000-K5

No.	62 95 930	62 95 960	62 96 240	62 96 250
Dim.	222 / 131	189 / 111	156 / 91	133.5 / 72



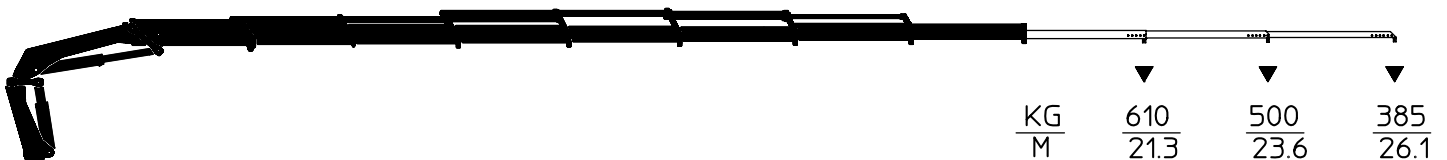
3000-K6

No.	62 95 960	62 96 240	62 96 250	62 96 260
Dim.	189 / 111	156 / 91	133.5 / 72	113.5 / 56



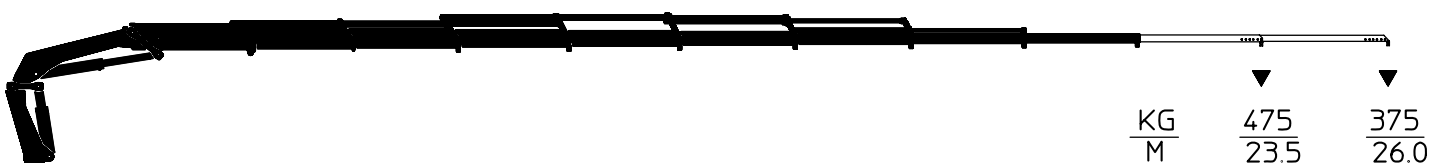
3000-K7

No.	62 96 240	62 96 250	62 96 260
Dim.	156 / 91	133.5 / 72	113.5 / 56



3000-K8

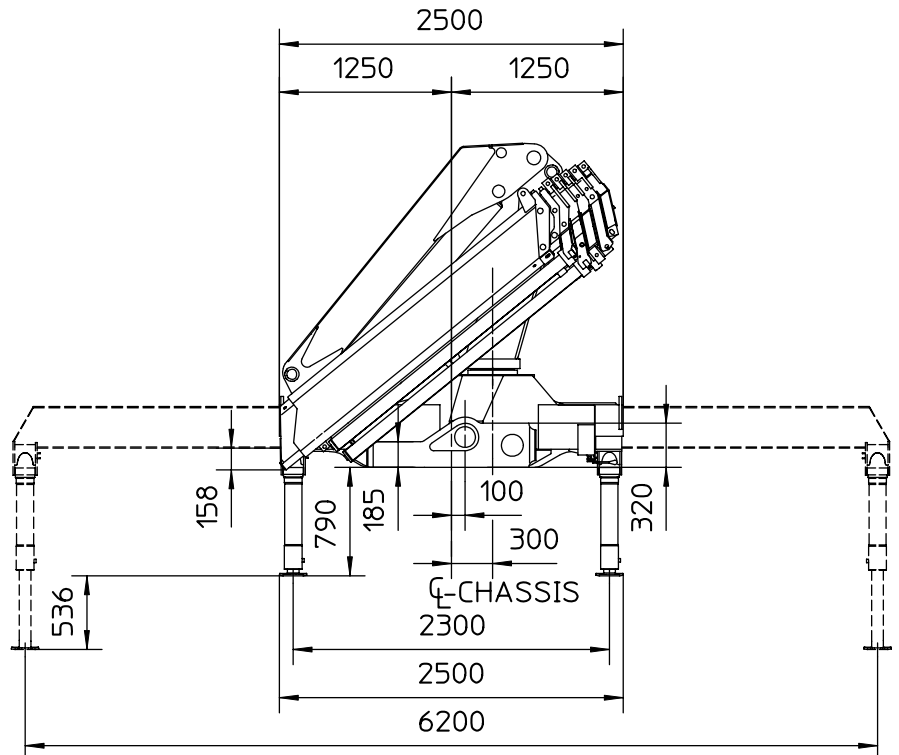
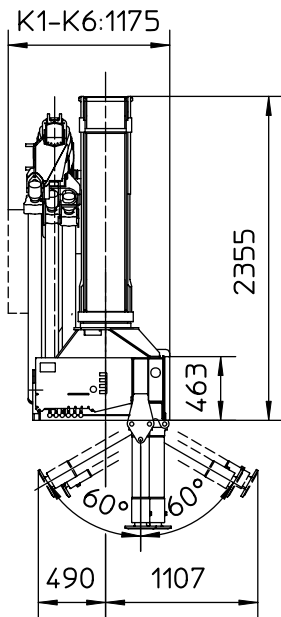
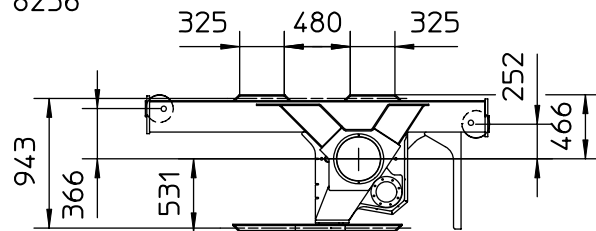
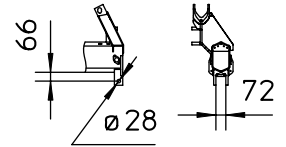
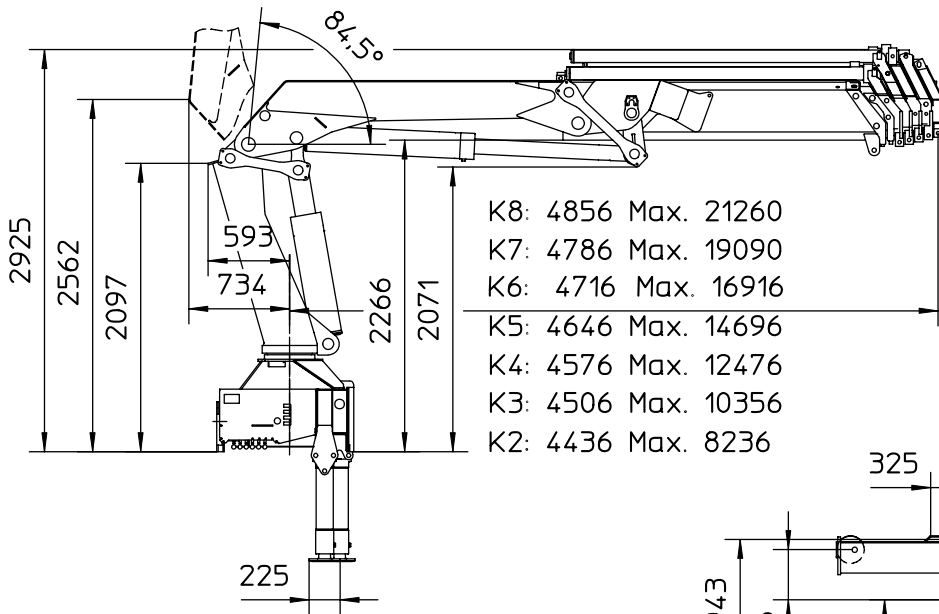
No.	62 96 250	62 96 260
Dim.	133.5 / 72	113.5 / 56



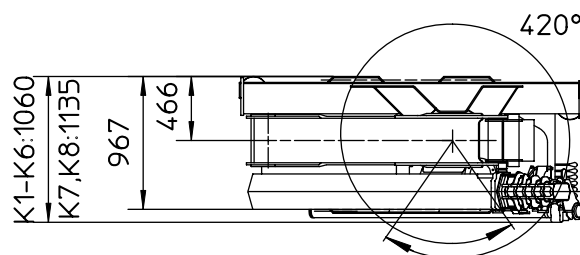
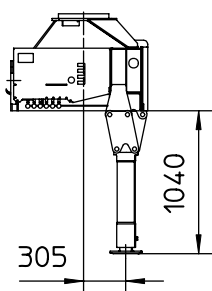
De angivne belastninger må ikke overskrides.

The loads stated, must not be exceeded.

Die angegebenen Belastungen dürfen nicht überschritten werden.



OPTION

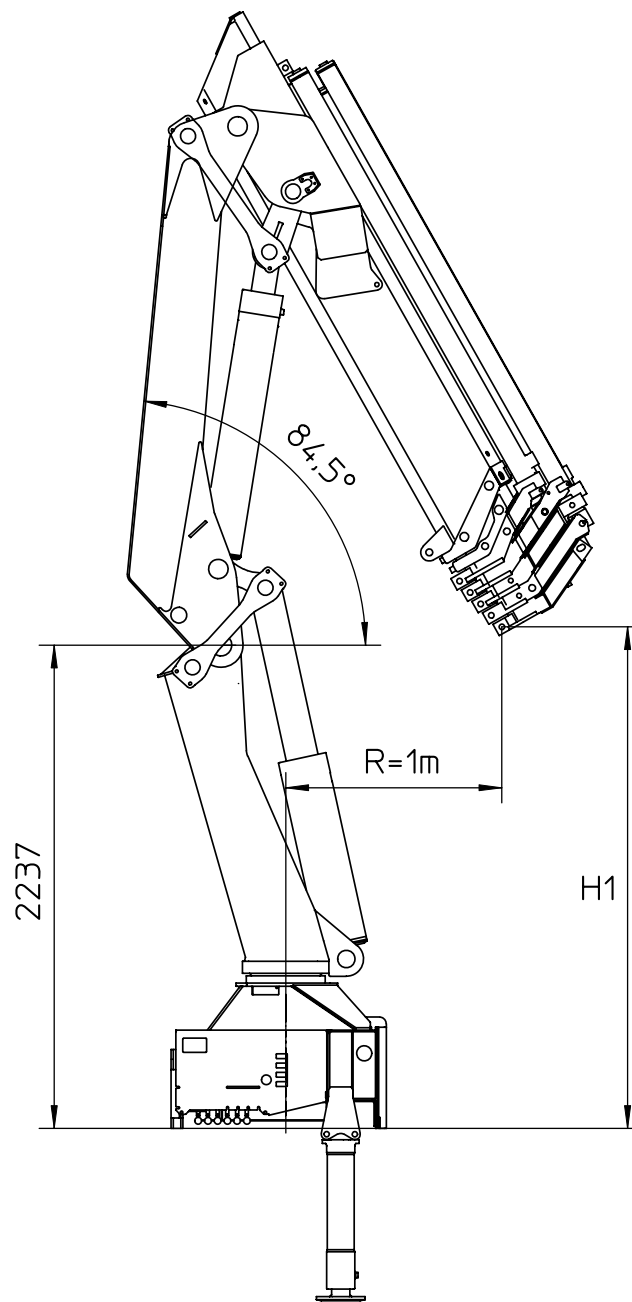




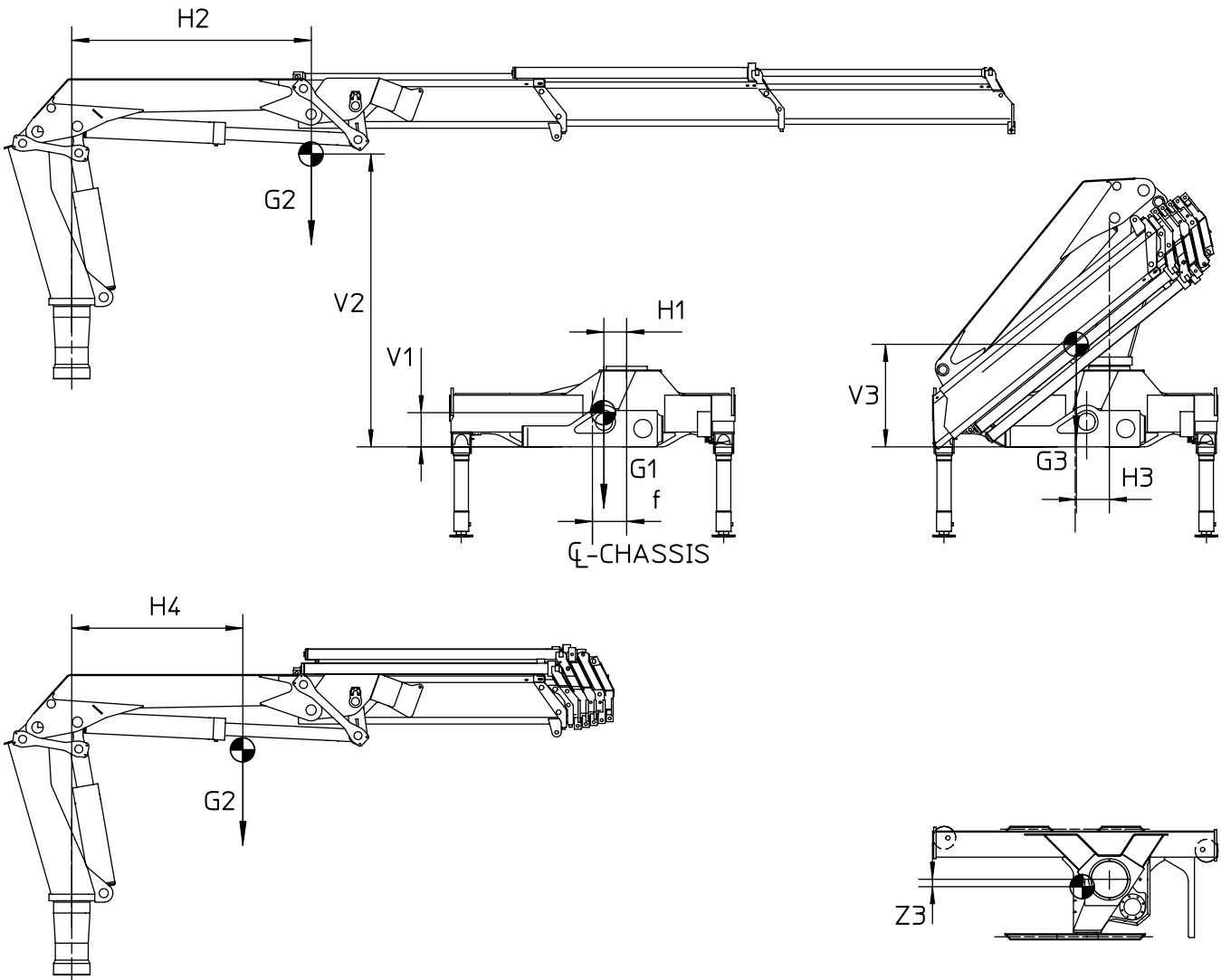
Løftehøjde ved søjle
Lifting height at loader column
Hubhöhe an der Säule

Side:
Page: 1 (1)
Seite:

Date: 10.03.2008
Datum:



	H1
3000-K2	2640
3000-K3	2560
3000-K4	2480
3000-K5	2400
3000-K6	2320
3000-K7	2240
3000-K8	2160



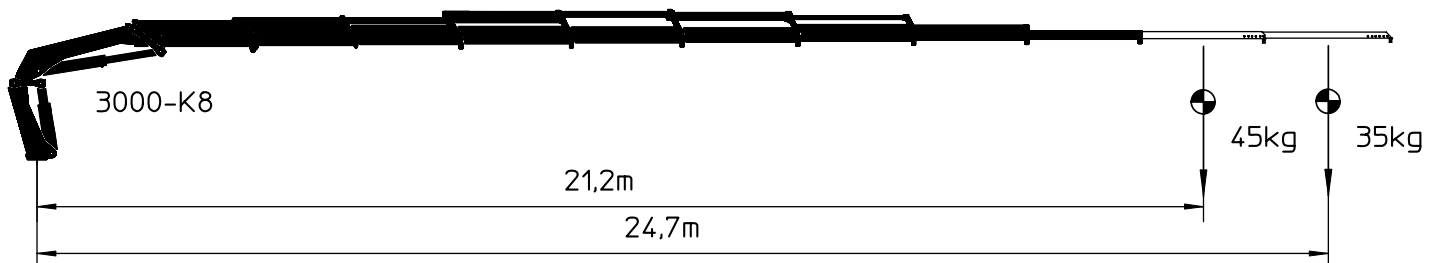
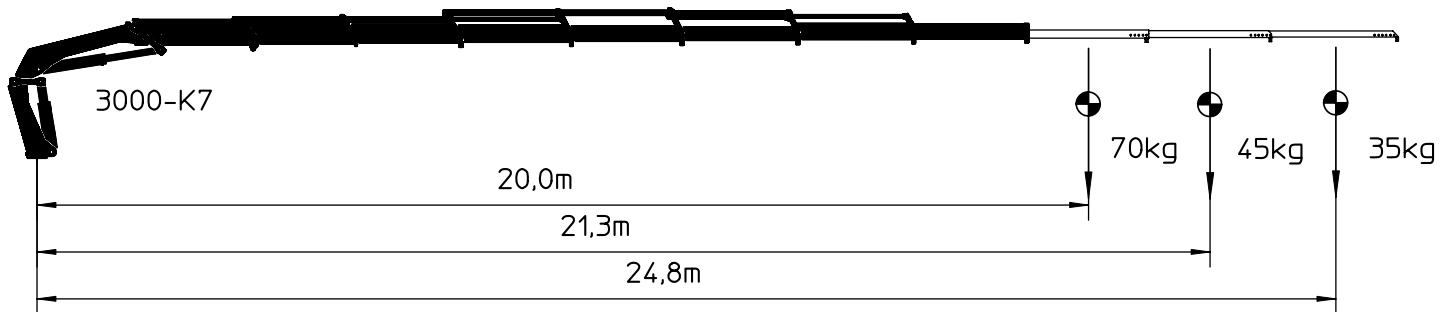
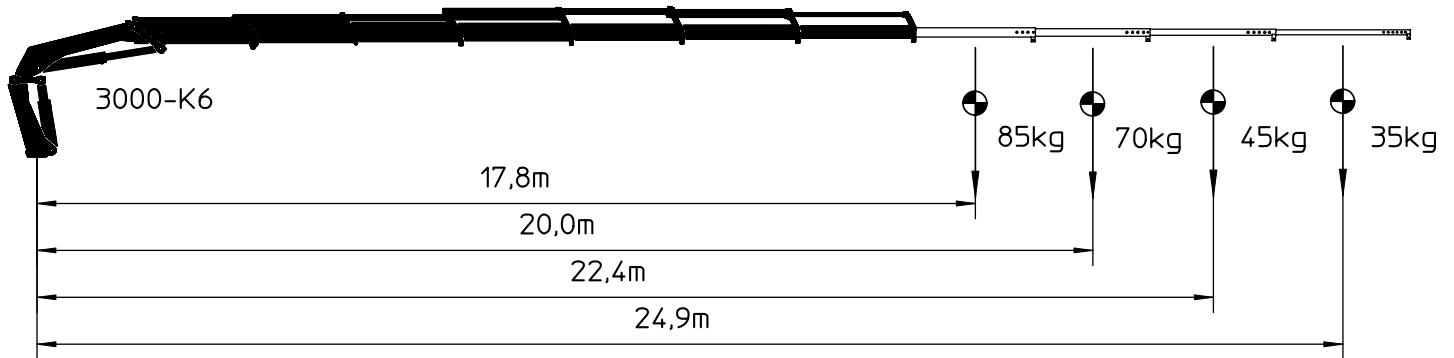
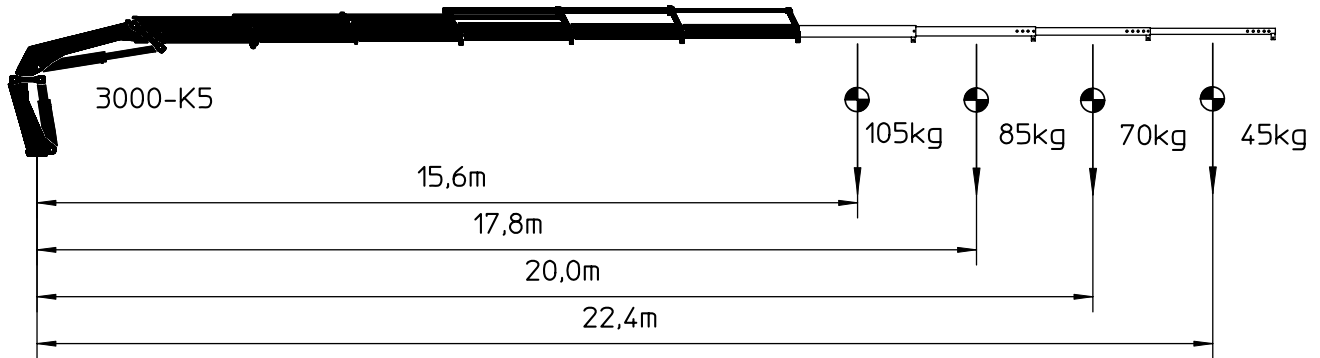
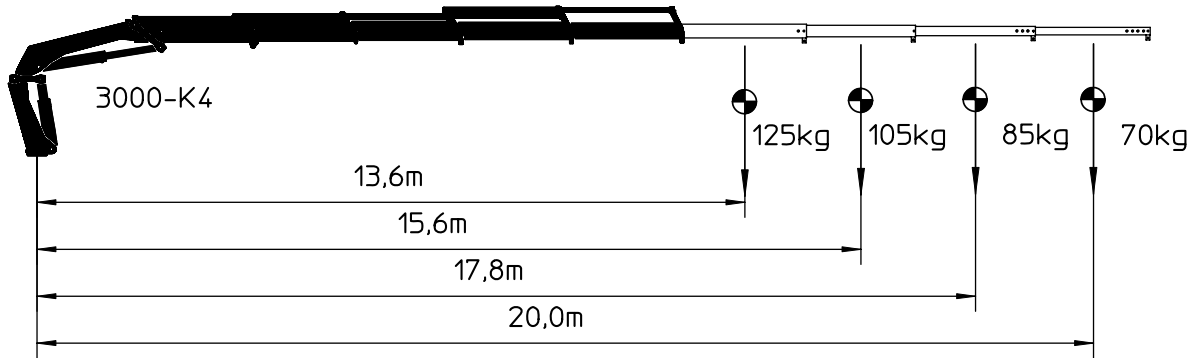
Model	V1	V2	V3	H1	H2	H3	H4	Z3	f	G1	G2	G3
3000-K2	300	2040	830	200	2100	295	1500	55	300	1175	1950	3125
3000-K3	300	2090	850	200	2800	300	1680	75	300	1175	2175	3350
3000-K4	300	2130	865	200	3500	300	1820	90	300	1175	2390	3565
3000-K5	300	2160	880	200	4225	295	1950	105	300	1175	2600	3775
3000-K6	300	2190	900	200	4950	290	2050	120	300	1175	2800	3975
3000-K7	300	2215	915	200	5600	285	2130	130	300	1175	2950	4125
3000-K8	300	2230	925	200	6150	285	2200	140	300	1175	3075	4250
	mm										kg	



Tyngdepunkter af forlængerarme K4-K8
Centres of gravity of extensions K4-K8
Schwerpunkte der Verlängerungen K4-K8

Side:
Page: 1 (1)

Date:
Date: 10.03.2008
Datum:





Performance	Unit	3000-K5	3000-K6
Hydraulic reach	m	22.6	24.8
Hydraulic telescopic movement Fly-Jib	mm	4950	4950
Reach with manual extensions	m	26.1	28.2
Lifting capacity, hydraulic (main boom 14° above horizontal)	kg - m	740 - 17.6 650 - 19.2 590 - 20.9 500 - 22.5	470 - 19.7 410 - 21.4 370 - 23.0 340 - 24.7
Lifting capacity, manual extensions (main boom, 14° above horizontal)	kg - m	375 - 24.2 300 - 25.9	300 - 26.4 270 - 28.1

Measures

Height above chassis, when folded	mm	2635	2635
Width, when folded	mm	2500	2500
Length, without kit of extra valves on Fly-Jib	mm	1175	1175
Length, with kit of extra valves on Fly-Jib	mm	1175	1175

Weights

Fly-Jib	kg	500	480
Valve and hose kit	kg	125	140
2 manual extensions	kg	45	45



Performance	Unit	K2	K3	K4
Hydraulic reach	m	16.7	18.4	20.1
Hydraulic telescopic movement Fly-Jib	mm	3300	4950	6600
Reach with manual extensions	m	-	-	23.9
Lifting capacity, hydraulic (main boom 14° above horizontal)	kg - m	1375 – 13.3 1180 – 15.0 1050 – 16.6	1270 – 13.3 1100 – 15.0 975 – 16.6 870 – 18.3	1200 – 13.3 1000 – 15.0 875 – 16.6 800 – 18.3 675 – 20.0
Lifting capacity, manual extensions (main boom, 14° above horizontal)	kg - m	-	725 – 20.2 575 – 22.2 450 – 24.1	550 – 21.9 450 – 23.8

Measures

Height above chassis, when folded	mm	2620	2700	2700
Width, when folded	mm	2500	2500	2500
Length, without kit of extra valves on Fly-Jib	mm	1180	1180	1180
Length, with kit of extra valves on Fly-Jib	mm	1180	1180	1180

Weights

Fly-Jib	kg	580	650	725
Valve and hose kit	kg	95	95	95
2 manual extensions	kg	-	80	60
3 manual extensions	kg	-	100	-



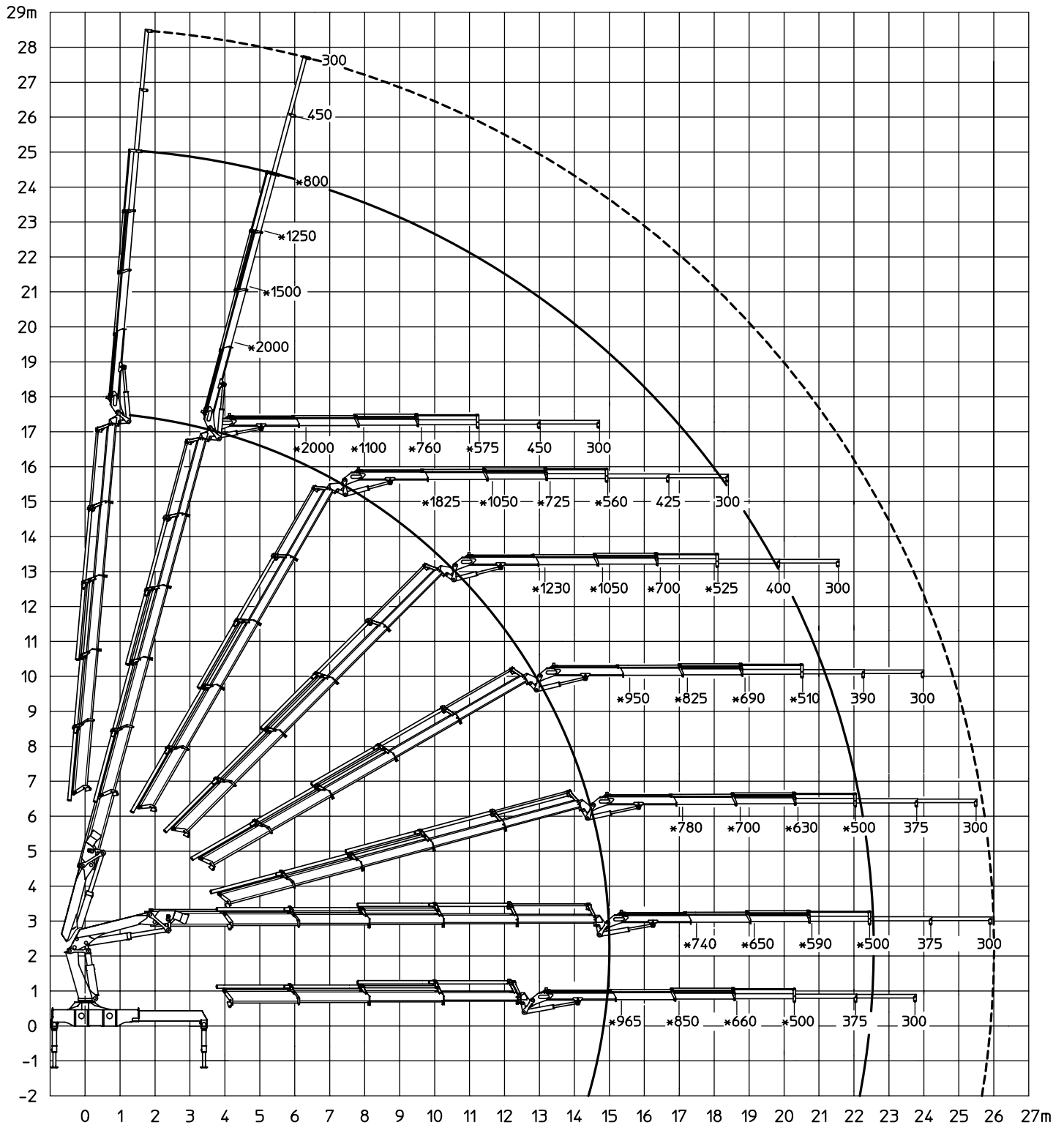
Performance	Unit	K2	K3	K4
Hydraulic reach	m	18.8	20.5	22.2
Hydraulic telescopic movement Fly-Jib	mm	3300	4950	6600
Reach with manual extensions	m	-	26.3	26.0
Lifting capacity, hydraulic (main boom 14° above horizontal)	kg - m	950 – 15.4 850 – 17.1 760 – 18.7	900 – 15.4 800 – 17.1 710 – 18.7 640 – 20.4	825 – 15.4 720 – 17.1 650 – 18.7 570 – 20.4 520 – 22.1
Lifting capacity, manual extensions (main boom, 14° above horizontal)	kg - m	-	475 – 22.3 400 – 24.2 325 – 26.2	400 – 24.0 300 – 25.9

Measures

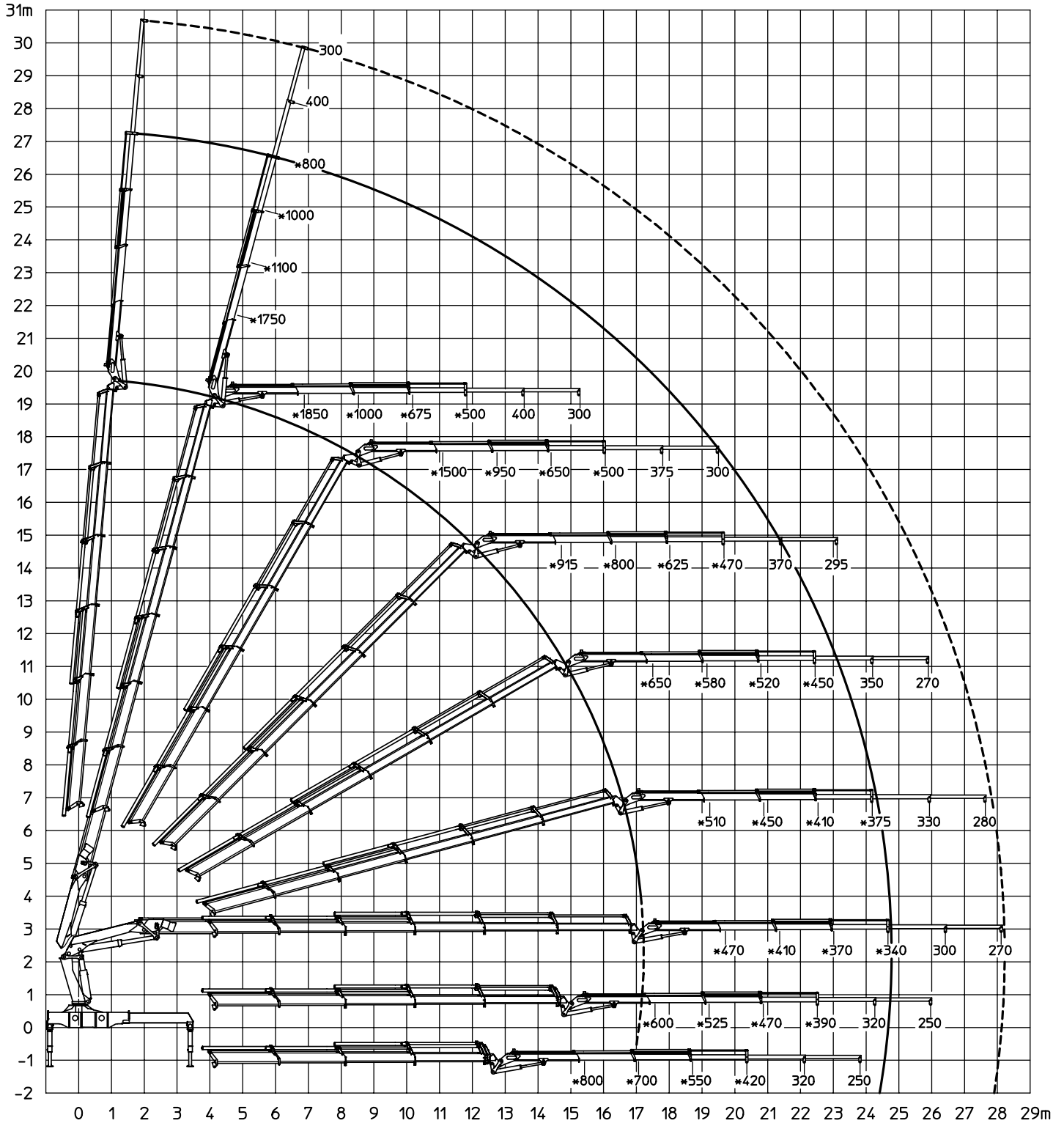
Height above chassis, when folded	mm	2660	2660	2660
Width, when folded	mm	2500	2500	2500
Length, without kit of extra valves on Fly-Jib	mm	1180	1180	1180
Length, with kit of extra valves on Fly-Jib	mm	1180	1180	1180

Weights

Fly-Jib	kg	580	650	725
Valve and hose kit	kg	110	110	110
2 manual extensions	kg	-	80	60
3 manual extensions	kg	-	100	-



*Uden forlængerarme
 *Without manual extensions
 *Ohne Verlängerungen

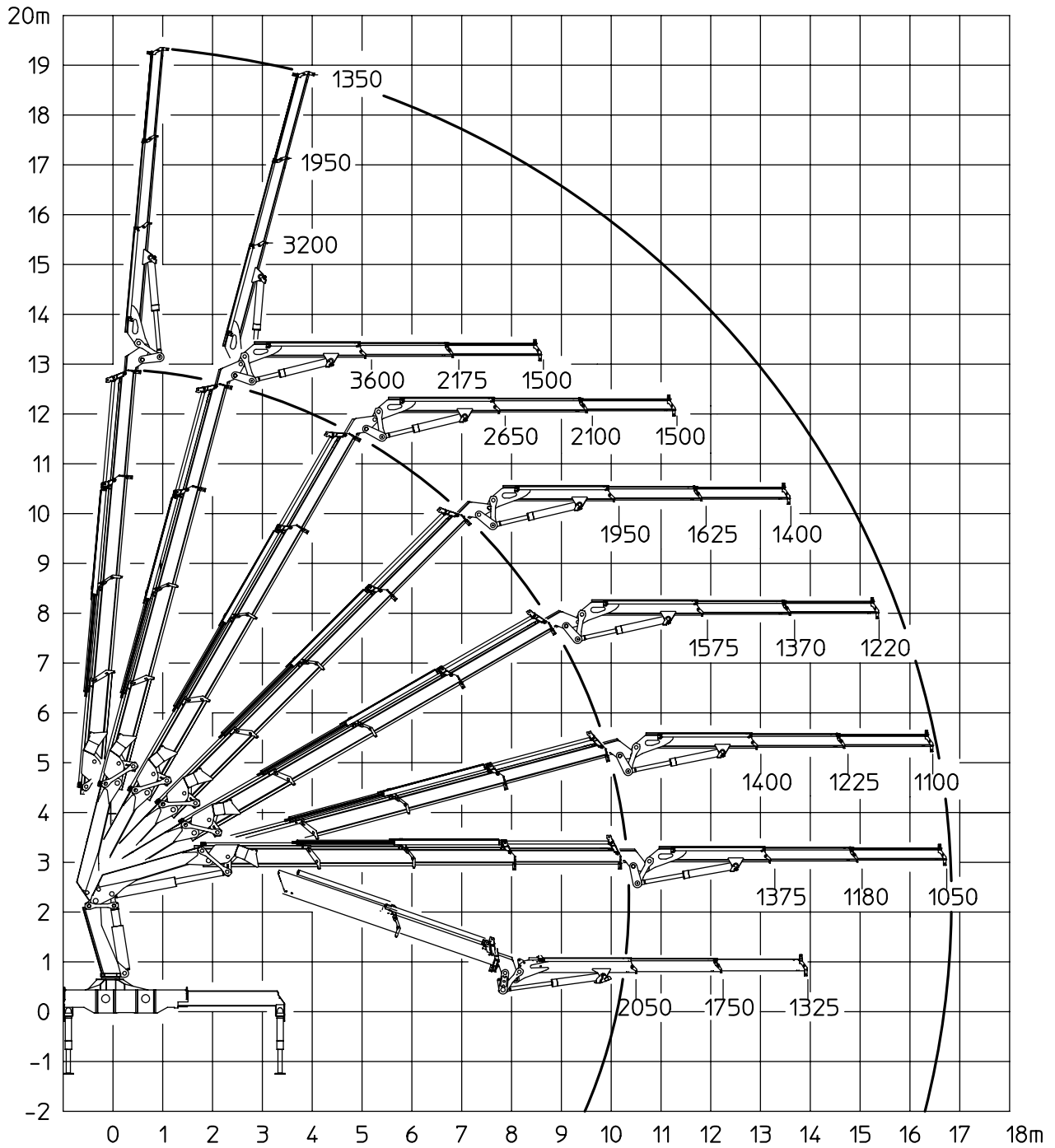


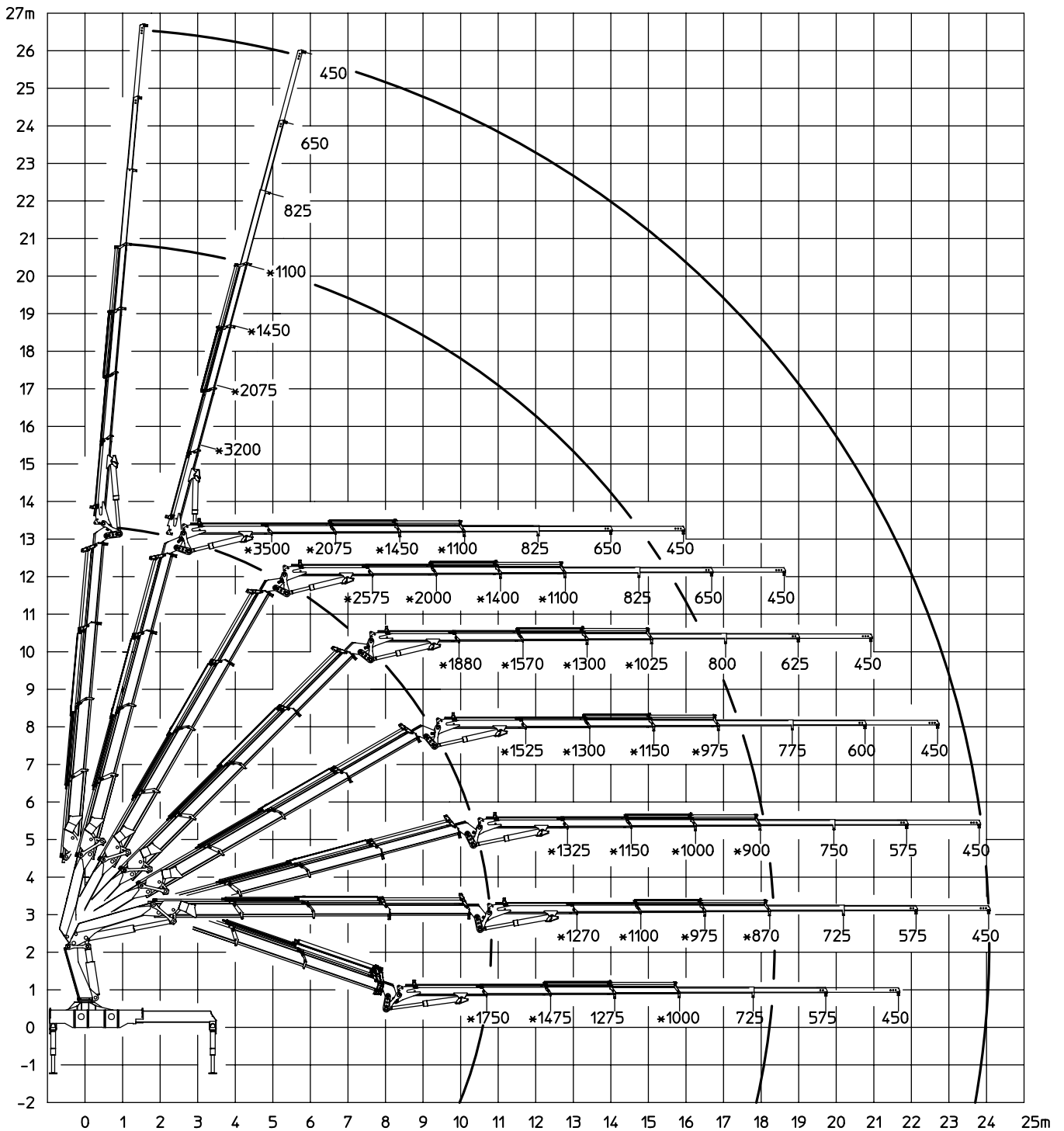
- *Uden forlængerarme
- *Without manual extensions
- *Ohne Verlängerungen



Belastungsdiagram, 3000-K3 med FJ900-K2
Lifting capacity diagram, 3000-K3 with FJ900-K2
Belastungsdiagramm, 3000-K3 mit FJ900-K2

Side: 1 (1)
Page: 1 (1)
Date: 10.03.2008
Datum:



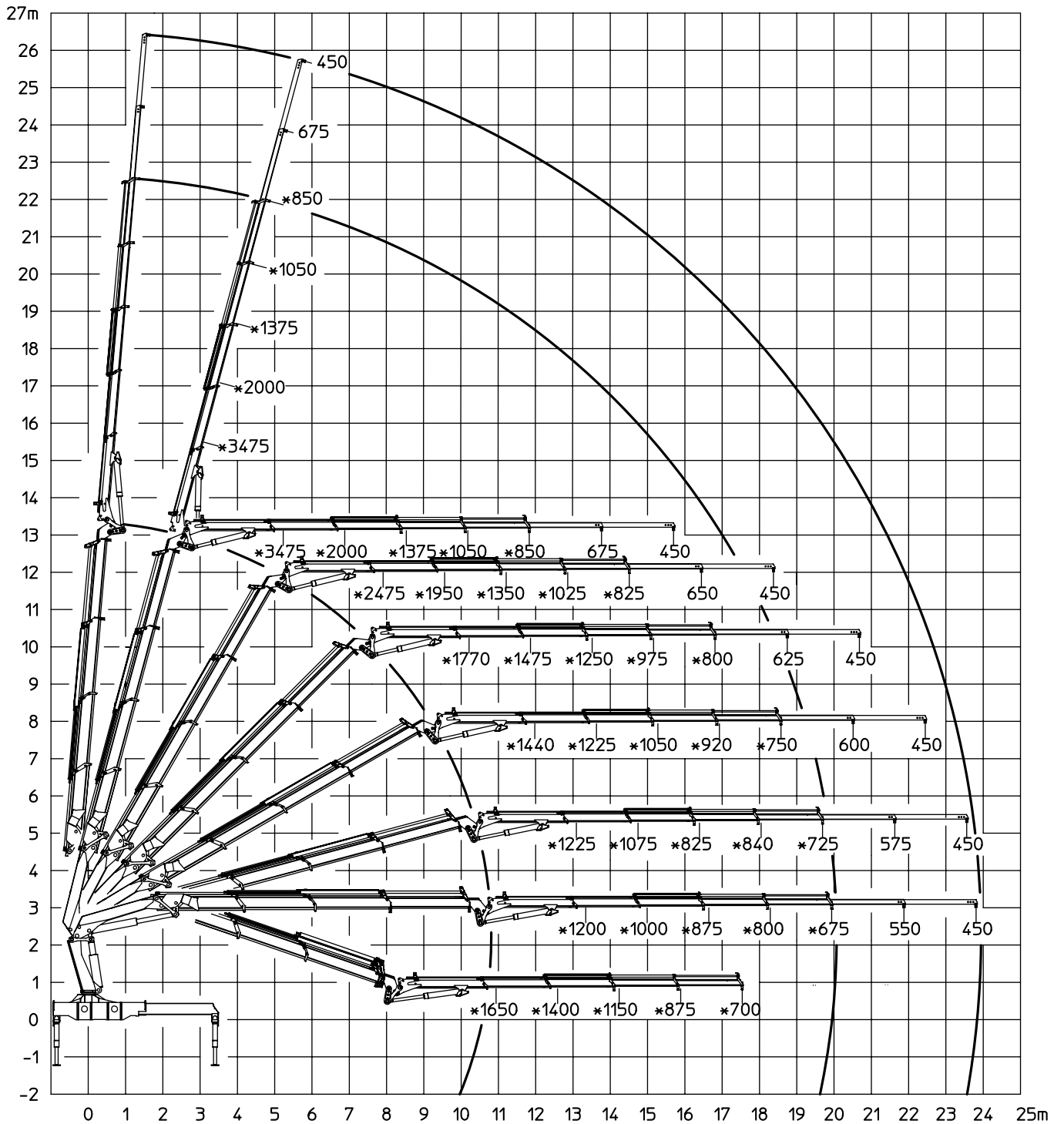


*Uden forlængerarme
 *Without manual extensions
 *Ohne Verlängerungen



Belastningsdiagram, 3000-K3 med FJ900-K4
Lifting capacity diagram, 3000-K3 with FJ900-K4
Belastungsdiagramm, 3000-K3 mit FJ900-K4

Side: 1 (1)
Page: 1 (1)
Date: 10.03.2008
Datum:

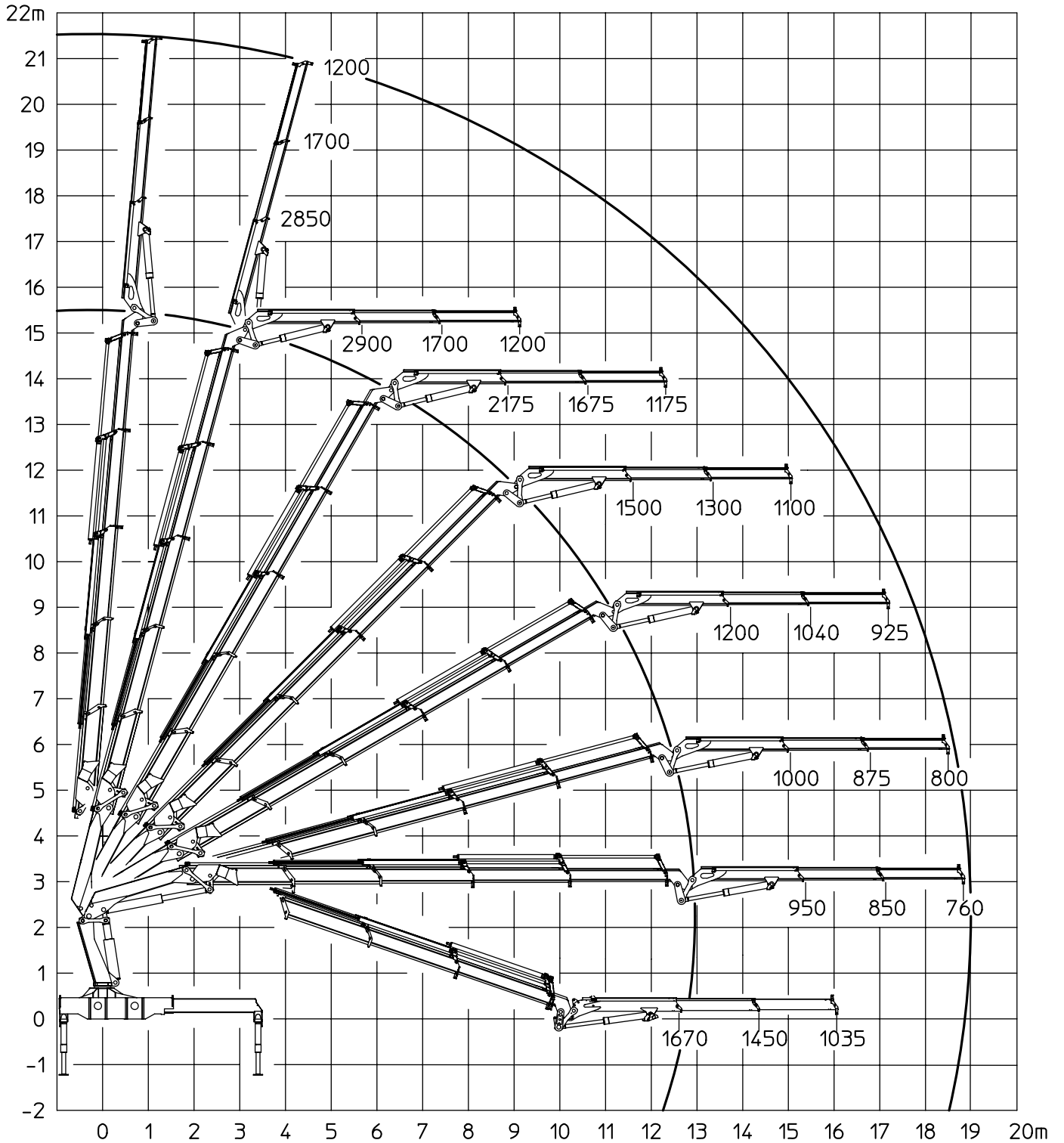


*Uden forlængerarme
*Without manual extensions
*Ohne Verlängerungen



Belastningsdiagram, 3000-K4 med FJ900-K2
Lifting capacity diagram, 3000-K4 with FJ900-K2
Belastungsdiagramm, 3000-K4 mit FJ900-K2

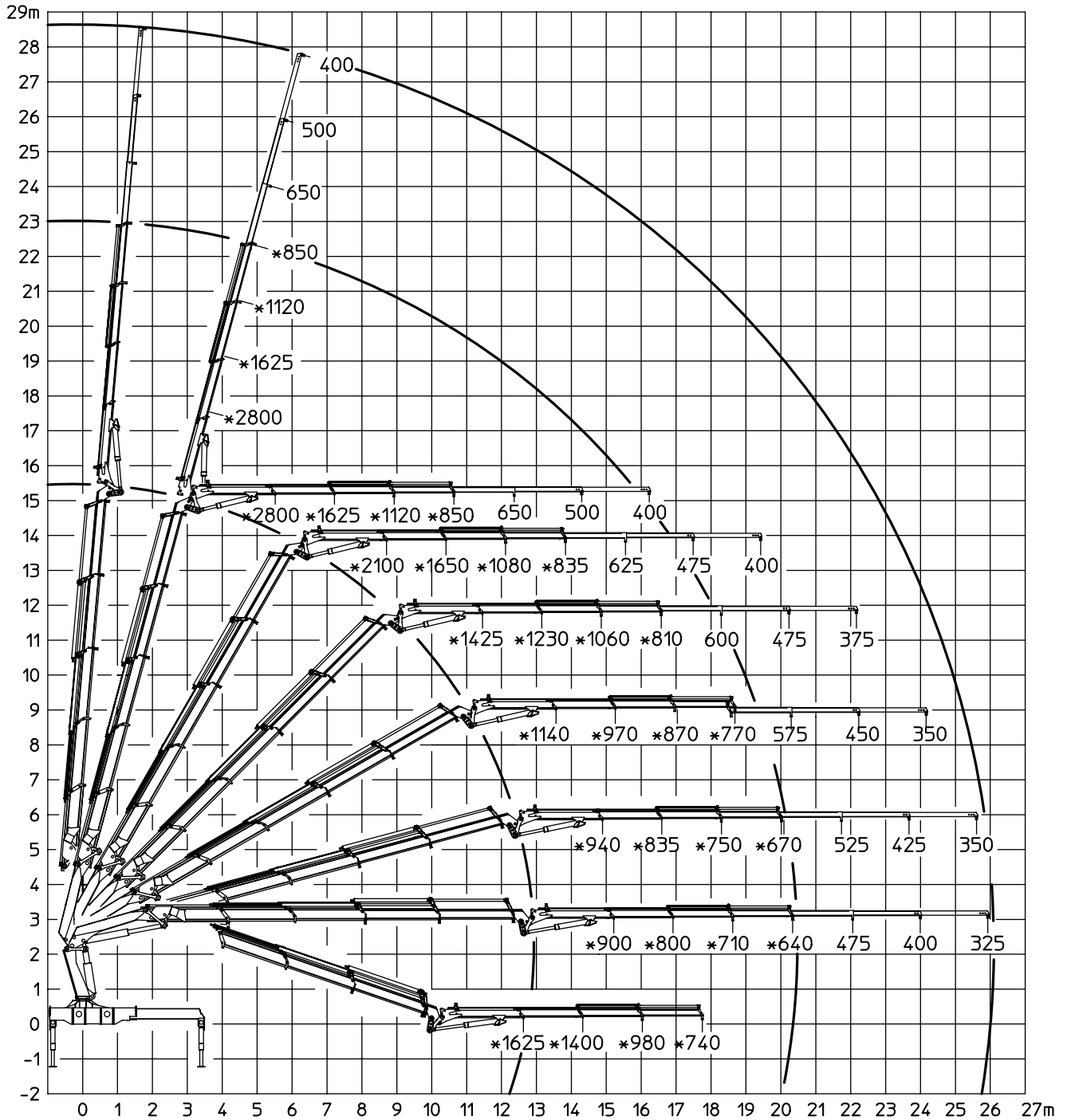
Side:
Page: 1 (1)
Seite:
Date: 10.03.2008
Datum:





Belastningsdiagram, 3000-K4 med FJ900-K3
 Lifting capacity diagram, 3000-K4 with FJ900-K3
 Belastungsdiagramm, 3000-K4 mit FJ900-K3

Side: 1 (1)
 Page: 1 (1)
 Date: 10.03.2008
 Datum:

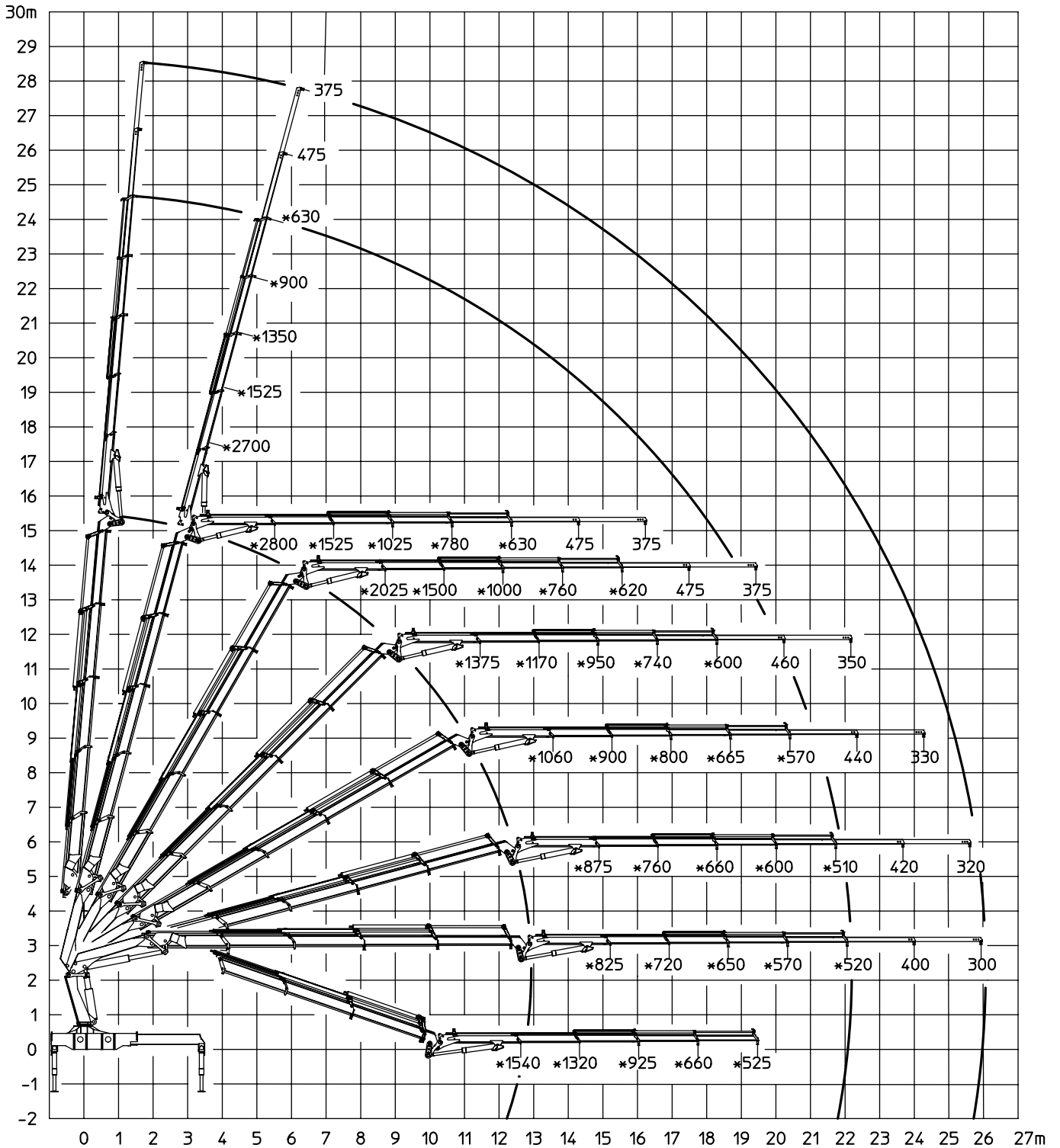


- *Uden forlængesarme
- *Without manual extensions
- *Ohne Verlängerungen



Belastningsdiagram, 3000-K4 med FJ900-K4
Lifting capacity diagram, 3000-K4 with FJ900-K4
Belastungsdiagramm, 3000-K4 mit FJ900-K4

Side:
Page: 1 (1)
Seite:
Date: 10.03.2008
Datum:



*Uden forlængerarme
*Without manual extensions
*Ohne Verlängerungen



TECHNICAL INFORMATION, SERIES 3000

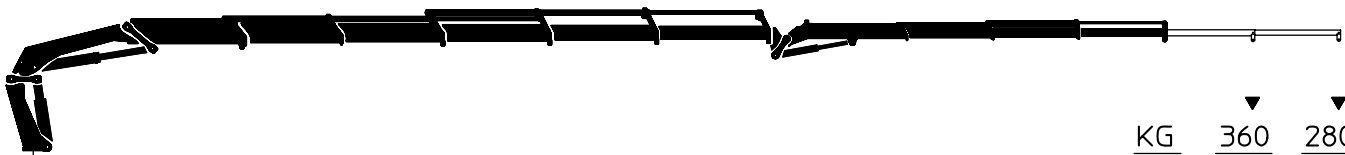
3 1 093133

Manuelle forlængerarme, fly-jib - FJ5, K5-K6
Manual extensions, Fly-Jib - FJ5, K5-K6
Manuelle Verlängerungen, Fly-Jib - FJ5, K5-K6

Side:
Page: 1 (1)
Seite:
Date: 10.03.2008
Datum:

No.	62 54 910	62 54 920
Dim.	120 / 57	102 / 45

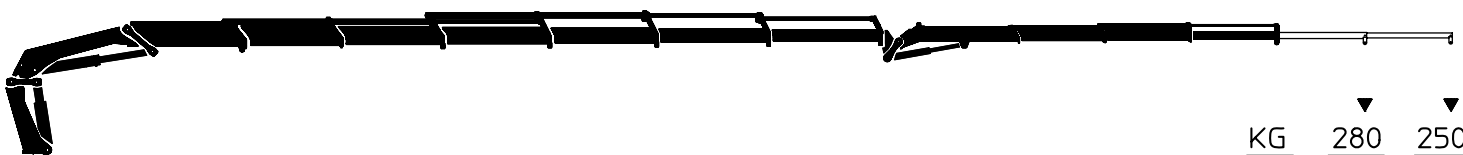
3000-K5



	▼	▼
KG	360	280
M	24,2	25,9

No.	62 54 910	62 54 920
Dim.	120 / 57	102 / 45

3000-K6



	▼	▼
KG	280	250
M	26,4	28,1

De angivne belastninger må ikke overskrides.

The loads stated, must not be exceeded.

Die angegebenen Belastungen dürfen nicht überschritten werden.

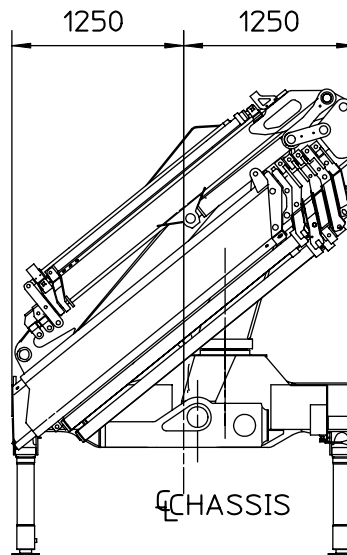
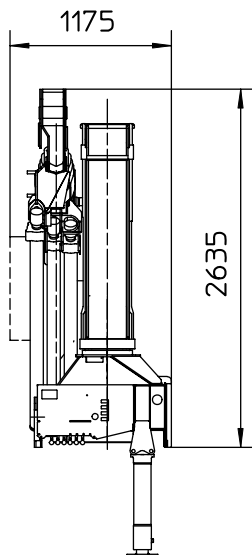
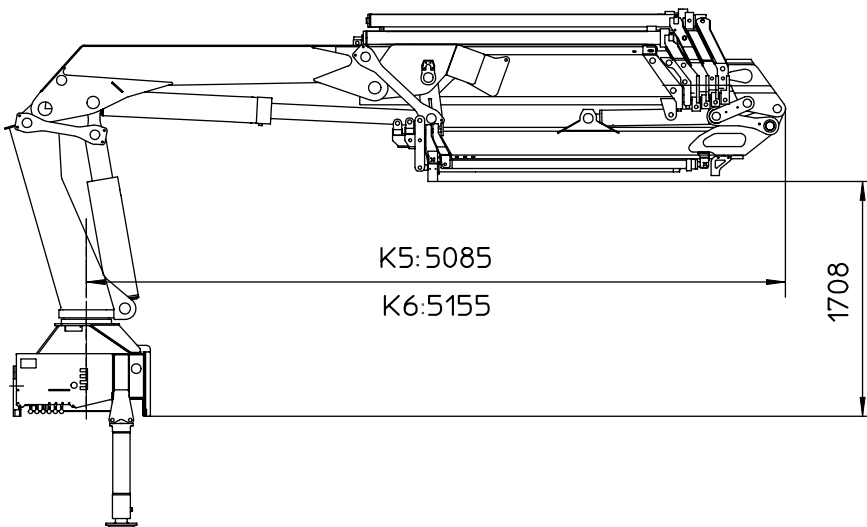
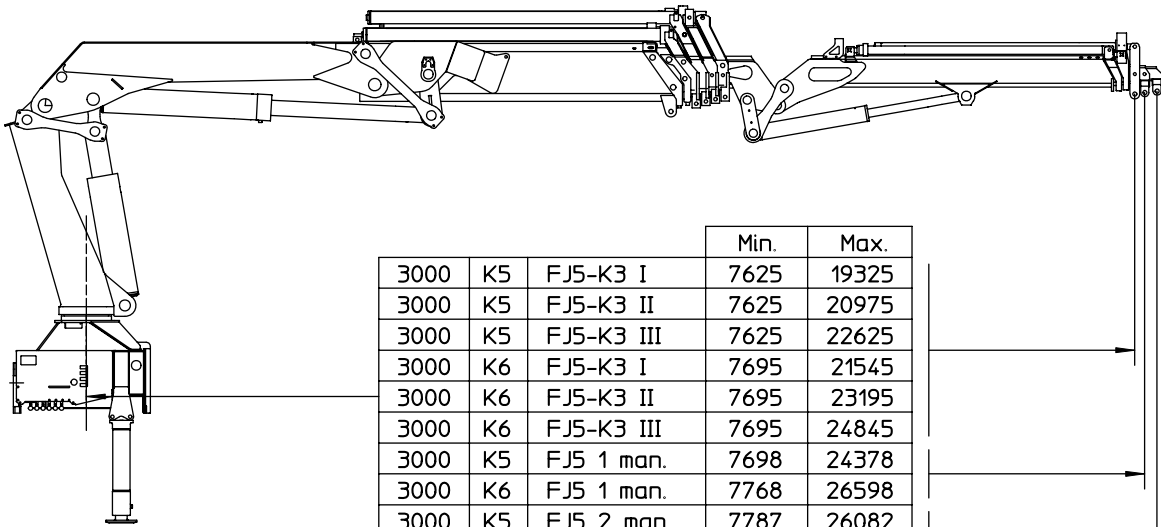


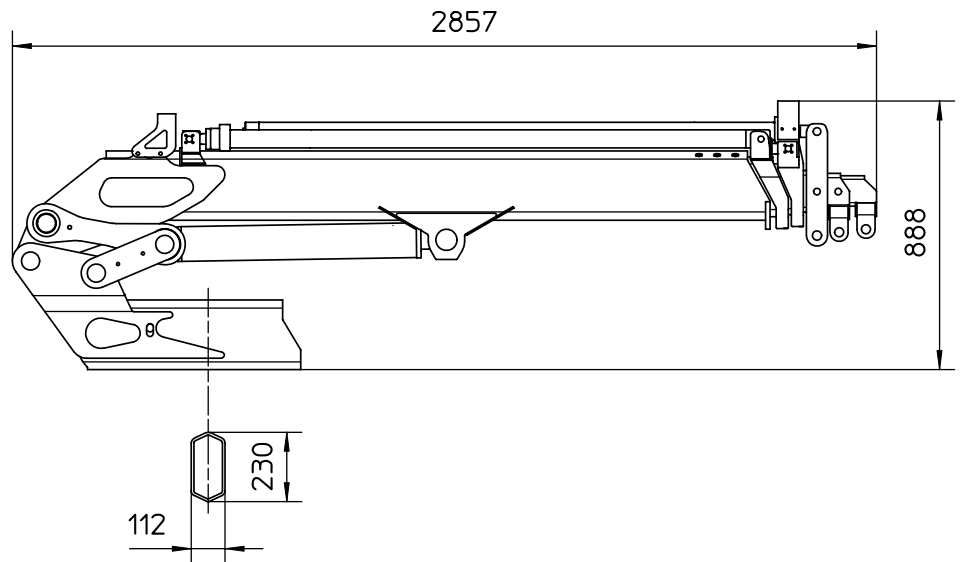
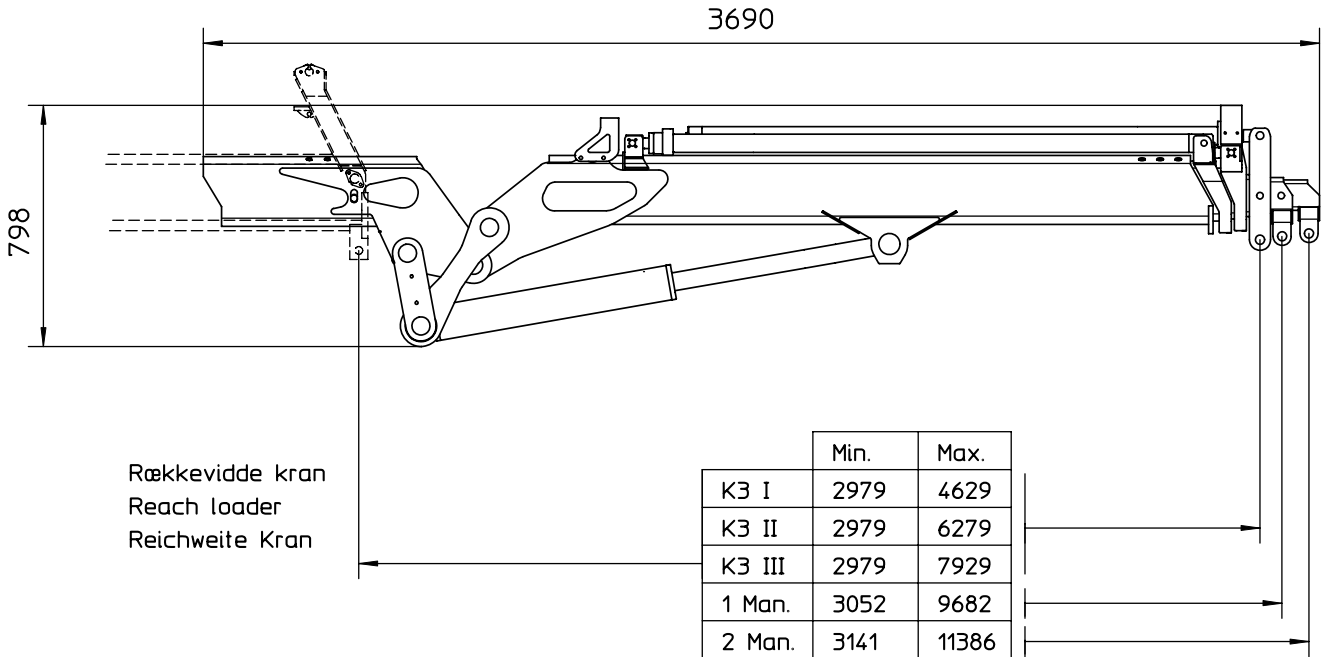
TECHNICAL INFORMATION, SERIES 3000

3 1 093140

Målskitse, 3000 med fly-jib - FJ5
 Dimension sketch, 3000 with Fly-Jib - FJ5
 Maßskizze, 3000 mit Fly-Jib - FJ5

Side:
 Page: 1 (1)
 Seite:
 Date: 10.03.2008
 Datum:



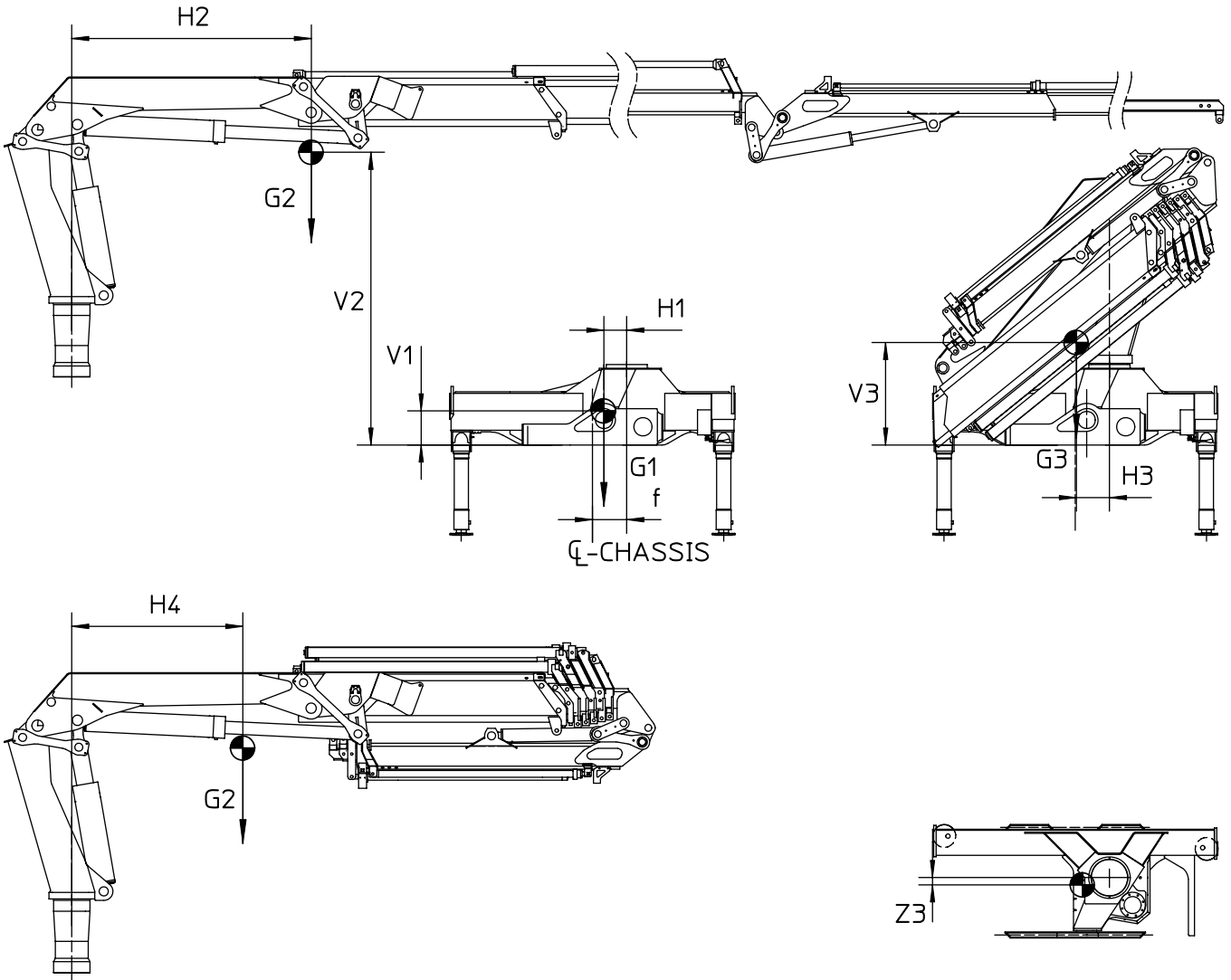


	Uden ekstraventilsæt Without extra valve kit ohne Zusatzventile
Maks bredde	265
Max. equipment width	265
Max. Gerätebreite	265



Tyngdepunkter, 3000 med fly-jib FJ5 / FJ900
 Centres of gravity, 3000 with Fly-Jib FJ5 / FJ900
 Schwerpunkte, 3000 mit Fly-Jib FJ5 / FJ900

Side:
 Page: 1 (1)
 Seite:
 Date: 10.03.2008
 Datum:



Model	V1	V2	V3	H1	H2	H3	H4	Z3	f	G1	G2	G3
3000-K3 FJ900-K2	300	2180	1030	200	4875	280	2140	120	300	1200	2825	4025
3000-K3 FJ900-K3	300	2200	1040	200	5230	285	2190	125	300	1200	2925	4125
3000-K3 FJ900-K4	300	2215	1050	200	5580	285	2240	130	300	1200	3000	4200
3000-K4 FJ900-K2	300	2220	1050	200	5740	285	2210	135	300	1200	3050	4250
3000-K4 FJ900-K3	300	2240	1060	200	6100	285	2240	140	300	1200	3150	4350
3000-K4 FJ900-K4	300	2255	1075	200	6460	290	2320	145	300	1200	3225	4425
3000-K5 FJ5	300	2250	980	200	6175	260	2175	145	300	1200	3200	4225
3000-K6 FJ5	300	2275	1000	200	6990	265	2260	155	300	1200	3425	4425
	mm									kg		